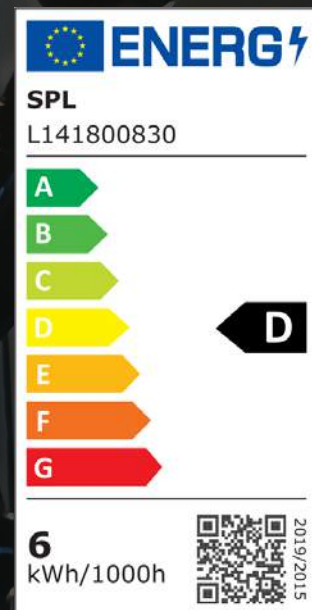




PROFESSIONAL LIGHTING



Energylabels according to Eprel

2021

SECOND EDITION

DECORATIVE
HOUSEHOLD
MARINE & INDUSTRY
SPECIALS & PROJECTS
ACCESSORIES

Introduction

Since 1995, Schiefer has been importing and exporting over 10,000 different types of lamps and keeps stock of well over 3 million lamps.

SPL is our LED brand; we offer a complete range of LEDs for consumers, industrial applications and lighting projects. The SPL LED program comprises 600 different items and is ever growing. We have our fully owned company in China with the name Chang Ji. Our European-Chinese product innovation team constantly develops new LEDs based on our customer's request. Direct and daily contact between our team in Europe, our Chinese offices and therefore Chinese factories ensure quick development and highest quality of all LEDs. At our Dutch premises, we have the same in-house testing equipment as in the factories. We put every single incoming batch to the test, which ensures a double guarantee when it comes to constant quality.

Our LEDs are designed to serve the higher end of the market with focus on perfect dimmability, high CRI, perfect McAdam step (SDCM) and Lifetime. Also, we design LEDs to cover special requests in the market. By doing so, we provide a one stop shop platform.

This catalogue covers our full retrofit LED program. Other LED products such as signalization LEDs can be found in our main catalogue. Our LED portfolio is split up into four different categories. Each field of application will have its own color. Within these four categories, we distinguish SPL and SPL Premium. Premium stands for the highest quality within that category, representing either the best CRI available or a prolonged warranty period, the best score on the McAdam chart and so on.

Decorative

Lamps that are themselves an eye catcher and have a decorative function, including standard filament LED.

Household

Lamps for general use, basic lighting of general spaces.

Marine & Industry

Lighting specifically designed for aboard ships, special battery driven systems, special voltages and industrial applications.

Specials & Projects

Signal LEDs and utility lighting for e.g. catering industry, retail, educational institutions, project lighting, shops or special application.

Accessories

Accessories surrounding LED lighting to support the products in the LED range of SPL Professional Lighting. Think for example of dimmers, switches, trailing edges and transformers.

Please check www.spl-lighting.com for any LED you may require. Our searching tool and full guideline will enable you to find the right LED for every specific request.

For any question other than regarding our website or the catalogue, please contact our sales department via sales@schiefer.nl



LED terms explained

Voltage

Volt or voltage indicates the electrical voltage that the lamp requires to make it run. The standard power is 230 volts. Different voltages apply for, for example, cars, ships and industrial appliances.

LED driver

LED lamps require only a very low voltage. To convert the mains voltage to this low voltage, an LED driver is required. The driver provides a constant power supply. The fewer fluctuations, the better it is. Many retrofit lamps have a built-in driver. Some LED lamps come with an external driver supplied separately.

Wattage

The wattage of a LED lamp source indicates how much energy it consumes. Voltage times Amp = Wattage. To know how much light an LED lamp really gives and which LED is the equivalent of which incandescent lamp, it is best to look at the amount of Lumen. Lumen per Watt differs from one LED to another.

Lifespan

The lifespan indicates how long the lamp lasts on average and is defined in operating hours. However, there are several factors that determine which life is actually achieved: see detailed explanation under "frequently asked questions SPL LED" about actual lifespan on our website.

Power factor

In electrical engineering, the power factor of an AC electrical power system is defined as the ratio of the real power absorbed by the load to the apparent power flowing in the circuit, and is a dimensionless number in the closed interval of -1 to 1. In an ideal situation, the value is 1. A LED lamp contains electronics and therefore often has a Pf lower than 1. For example: a 10W LED lamp with a Pf of 0.5 actually consumes $10W / 0.5 = 20W$. The closer the Pf is to value 1, the better.

Lumen

The rendering of light is usually defined in Lumen (lm). The more Lumen, the higher the amount of visible light. When replacing incandescent lamps by LED the following conversion table can be used to obtain the same light output.

Incandescent	LED	Lumen
15 Watt	3 Watt	100-150 lm
25 Watt	5-7 Watt	200-300 lm
40 Watt	8-10 Watt	400-500 lm
60 watt	11-15 Watt	500-800 lm
75 Watt	14-20 Watt	700-1000 lm
100 Watt	20-25 Watt	1000 lm

LED Filament sticks

The LED filament sticks that Schiefer / SPL uses for their Premium line have got a thicker phosphor layer than is used on average in the market. This results in a more even light distribution and prevents shadowing. The sticks are mounted in dimensionally stable, punched out holders, so that they are always at the same height and at the same distance from each other. The majority of the Premium line is equipped with CRI90 sticks. This makes the filament LEDs from the premium line very suitable for professional purposes. The filament LEDs from this series are loaded for only 85%. This makes the lumen per watt to be slightly lower, but helps ensuring a longer lifespan. All Filament LEDs within this line, including the Flexled, can be dimmed together. This is achieved because we use the same driver technology throughout these series. Standard CRI82 sticks are used in the regular line. Due to the less thick phosphor layer on the sticks, a higher lumen per watt is achieved because the filament sticks are being fully loaded.

The LEDs from this line are suitable for the consumer market.

Kelvin

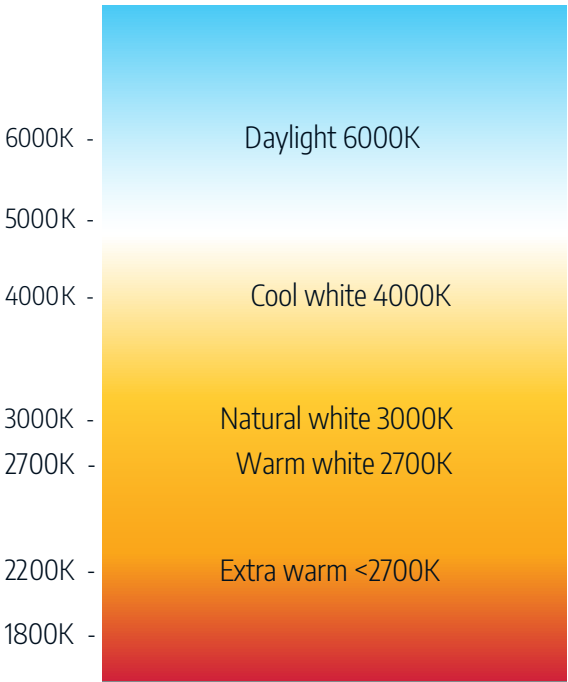
The color of light is defined in Kelvin (K). A high Kelvin value represents a cold white light; a low Kelvin value gives a warm, more yellow color.

CRI

De Color Rendering Index (CRI) indicates the ability of a light source to reveal the true colors of its surrounding objects on a scale from 0 to 100: the higher the CRI rating, the more accurate the color rendering.

SDCM/Binning

No LED chip is the same at the microscopic level. During the production of LED chips, differences in color reproduction and light output inevitably arise. After production, they are ideally selected and grouped. This process is called binning. The level at which selection and grouping are ultimately done determines the color consistency of the finally assembled LED lamps. The color deviation is indicated in SDCM (Standard Deviation or Color Matching) from 1 (no deviation) to 6 (large deviation). Filament LEDs cannot reach a score better than 6, while COB and SMD LEDs can easily obtain a 4 or 5. The better the binning, the higher the price of a LED.



Index

Decorative

8

Big FleX Premium	9	Rustika Premium	37
FleX C100 Premium	10	Rustika	37
Big FleX Mystery Premium	11	Matt White Premium	39
Big FleX Bubble Premium	13	Tubular Deco Premium	40
FleX Mystery Premium	14	Special Premium	40
Big FleX Mush Premium	15	Vintage	41
Big FleX Ufo Premium	16	Candle Premium	43
Big FleX Cone Premium	17	Candle	44
Big FleX Pine-Cone Premium	18	Tip Candle Premium	44
Big FleX	19	Tip Candle	45
Big Globe Premium	20	Twisted Candle Premium	46
Big FleX R160 Premium	21	Twisted Candle	46
Big Spiral Premium	22	Ball E27 Premium	47
FleX GLS Premium	22	Ball E27	47
FleX AX Tube Premium	23	Ball E14 Premium	48
FleX Rustika Premium	23	Ball E14	48
FleX Globe Premium	24	Ball Ba15d Premium	49
FleX Double Helix	25	Ball Ba22d Premium	49
FleX Double Loop Helix	25	Ball Ba22d	49
FleX Globe Colored Premium	26	General E27 Premium	50
FleX Tube Premium	27	General E27	50
Colorenta Premium	28	General Ba22d Premium	51
Globe G80 Premium	29	General Ba22d	51
Globe G95	30	Top Mirror Premium	52
Globe G95 Premium	30	Top Mirror	52
Globe G125	31	Flame Premium	53
Globe G125 Premium	32	Flame	53
Globe Top-Mirror Premium	33	Pygmy Premium	54
Globe Top-Mirror	34	Tubular Fila Premium	55
Globe G125 Ice Premium	35	Reflector Fila Premium	55
Globe Special Premium	36		

Adjustable Beam Angle Premium Dim	57	Spot GU10 Glass	69
Dim To Warm Premium	57	Spot GU10 MR11 Premium	70
Dim To Warm	58	Spot GU10 MR11	70
G4 Premium	59	GU10 Glass	71
G4	60	Spot GU5.3 12V Premium	71
G9 Premium	61	Spot GU5.3 12V Glass Dimmable	72
G9 Premium 120V	61	Spot GU5.3 12V Glass	72
G9	62	Spot GU4 12V Premium	72
GY6.35 Premium	63	Spot GU4 12V Dimmable	73
General Dimmable Premium	63	Spot GU4 12V Dimmable	73
General VR 100-240V	64	Spot GU4 12V	73
PAR Premium	65	Striplight Premium	74
PAR Glass	66	Tubular Pygmy Premium	75
Reflector Premium	66	Tubular Nightlight	75
R7s Round	67	Tubular Premium	76
Spot GU10 Premium	68	S19 glass	76
Spot GU10 Glass Premium	69	Disc GX53 Premium	76

Marine & Industry

Spot GU10 Dimmable Premium	79	Tubular VR 10-30V Premium	84
Spot GU10 VR 100-250V Premium	79	Tubular 24V Premium	85
Spot GU10 VR 24-30V	80	Tubular VR 100-240V Premium	85
Spot GU5.3 12V	80	Filament 24V Premium	86
Spot GU5.3 24V Premium	81	Tubular Filament	86
Spot GU5.3 24V	81	Tubular VR 95-265V	87
G4 VR 10-30V Premium	81	Navigation Led	87
General VR 10-60V Premium	82	T8 Tube Premium	88
General VR 100-240V High Kelvin	82	T8 Tube	88
Tubular Premium Compact	83	T15 WB Wedge Base Premium	89
Tubular Compact	84		

Specials & Projects

90

Spot GU4 MR8 Premium	91	Spot Ba15d AR37 Premium	96
Spot GU5.3 12V Dimmable Premium	92	Light Sensor	97
Spot GU10 ES63 Dimmable Premium	92	GU10 Colour	98
Spot GU10 ES111 Dimmable Premium	93	GU5.3 MR16 Colour	98
Spot G53 AR111 Dimmable Premium	94	Party Colour Premium	99
Spot Ba15d AR70 Premium	95	Shatterproof Polycarbonate	100
Project PAR Premium	95	Party Colour	101

Accessories

102

Party	103
Transformer	103
Dimmer	104
Hook	104

Decorative

Lamps that are themselves an eye catcher and have a decorative function, including standard filament LED.



PROFESSIONAL
LIGHTING

Big Flex Premium



Figure 1



Figure 2



Figure 3

Article No	Description	Figure	Socket	Diameter (mm)	Total length (mm)	Lumen	Candela	Rated Wattage	Colour temp	Beam angle	Current type	Voltage	Power factor	Energy class	Dimmable	Lifespan (hrs)	Repl. wattage	Warranty (years)
LF023900105	E27 Globe G300x400 250Lm 6W 920 Gold	1	E27			250		6	920	360	AC	220 - 240	0.85	G	Yes	15000	25	2
LF023900205	E27 Bell 225x480 250Lm 6W 920 Gold	2	E27			250		6	920	360	AC	220 - 240	0.85	G	Yes	15000	25	2
LF023900305	E27 ST180x600 250Lm 6W 920 Gold	3	E27			250		6	920	360	AC	220 - 240	0.85	G	Yes	15000	25	2



Flex C100 Premium



Figure 1



Figure 2



Figure 3

Article No	Description	Figure	Socket	Diameter (mm)	Total length (mm)	Lumen	Candela	Rated Wattage	Colour temp	Beam angle	Current type	Voltage	Power factor	Energy class	Dimmable	Lifespan (hrs)	Repl. wattage	Warranty (years)
LF023911009	E27 Ellipse C100x230 190Lm 4W 922	1	E27			190		4	922	360	AC	220 - 240	0.85	G	Yes	15000	20	2
LF023911005	E27 Ellipse C100x230 140Lm 4W 920 Gold	2	E27			140		4	920	360	AC	220 - 240	0.85	G	Yes	15000	15	2
LF023911003	E27 Ellipse C100x230 100Lm 4W 822 Smoke	3	E27			100		4	822	360	AC	220 - 240	0.85	G	Yes	15000	11	2



Big Flex Mystery Premium



Figure 1



Figure 2



Figure 3

Article No	Description	Figure	Socket	Diameter (mm)	Total length (mm)	Lumen	Candela	Rated Wattage	Colour temp	Beam angle	Current type	Voltage	Power factor	Energy class	Dimmable	Lifespan (hrs)	Repl. wattage	Warranty (years)
LF023911209	E27 Mystery A165x280 190Lm 4W 922	1	E27			190		4	922	360	AC	220 - 240	0.85	G	Yes	15000	20	2
LF023911205	E27 Mystery A165x280 140Lm 4W 920 Gold	2	E27			140		4	920	360	AC	220 - 240	0.85	G	Yes	15000	15	2
LF023911203	E27 Mystery A165x280 100Lm 4W 822 Smoke	3	E27			100		4	822	360	AC	220 - 240	0.85	G	Yes	15000	11	2



Big Flex Bubble Premium



Figure 1



Figure 2



Figure 3

Article No	Description	Figure	Socket	Diameter (mm)	Total length (mm)	Lumen	Candela	Rated Wattage	Colour temp	Beam angle	Current type	Voltage	Power factor	Energy class	Dimmable	Lifespan (hrs)	Repl. wattage	Warranty (years)
LF023911309	E27 Bubble-5 125x325 190Lm 4W 922	1	E27			190		4	922	360	AC	220 - 240	0.85	G	Yes	15000	20	2
LF023911305	E27 Bubble-5 125x325 140Lm 4W 920 Gold	2	E27			140		4	920	360	AC	220 - 240	0.85	G	Yes	15000	15	2
LF023911303	E27 Bubble-5 125x325 100Lm 4W 822 Smoke	3	E27			100		4	822	360	AC	220 - 240	0.85	G	Yes	15000	11	2

FleX Mystery Premium



Figure 1



Figure 2



Figure 3

Article No	Description	Figure	Socket	Diameter (mm)	Total length (mm)	Lumen	Candela	Rated Wattage	Colour temp	Beam angle	Current type	Voltage	Power factor	Energy class	Dimmable	Lifespan (hrs)	Repl. wattage	Warranty (years)
LF023911109	E27 Mystery G125x176 190Lm 4W 922	1	E27			190		4	922	360	AC	220 - 240	0.85	G	Yes	15000	20	2
LF023911105	E27 Mystery G125x176 140Lm 4W 920 Gold	2	E27			140		4	920	360	AC	220 - 240	0.85	G	Yes	15000	15	2
LF023911103	E27 Mystery G125x176 100Lm 4W 822 Smoke	3	E27			100		4	822	360	AC	220 - 240	0.85	G	Yes	15000	11	2

Big Flex Mush Premium



Figure 1



Figure 2



Figure 3

Article No	Description	Figure	Socket	Diameter (mm)	Total length (mm)	Lumen	Candela	Rated Wattage	Colour temp	Beam angle	Current type	Voltage	Power factor	Energy class	Dimmable	Lifespan (hrs)	Repl. wattage	Warranty (years)
LF023911409	E27 Mush 250x190 190Lm 4W 922	1	E27			190		4	922	360	AC	220 - 240	0.85	G	Yes	15000	20	2
LF023911405	E27 Mush 250x190 140Lm 4W 920 Gold	2	E27			140		4	920	360	AC	220 - 240	0.85	G	Yes	15000	15	2
LF023911403	E27 Mush 250x190 100Lm 4W 822 Smoke	3	E27			100		4	822	360	AC	220 - 240	0.85	G	Yes	15000	11	2



Big Flex Ufo Premium



Figure 1



Figure 2

Article No	Description	Figure	Socket	Diameter (mm)	Total length (mm)	Lumen	Candela	Rated Wattage	Colour temp	Beam angle	Current type	Voltage	Power factor	Energy class	Dimmable	Lifespan (hrs)	Repl. wattage	Warranty (years)
LF023911905	E27 Ufo 200x145 140Lm 4W 920 Gold	1	E27			140		4	920	360	AC	220 - 240	0.85	G	Yes	15000	15	2
LF023911903	E27 Ufo 200x145 100Lm 4W 822 Smoke	2	E27			100		4	822	360	AC	220 - 240	0.85	G	Yes	15000	11	2

Big Flex Cone Premium



Figure 1



Figure 2



Figure 3

Article No	Description	Figure	Socket	Diameter (mm)	Total length (mm)	Lumen	Candela	Rated Wattage	Colour temp	Beam angle	Current type	Voltage	Power factor	Energy class	Dimmable	Lifespan (hrs)	Repl. wattage	Warranty (years)
LF023911609	E27 Cone 200x408 320Lm 6W 922	1	E27			320		6	922	360	AC	220 - 240	0.85	G	Yes	15000	30	2
LF023911605	E27 Cone 200x408 250Lm 6W 920 Gold	2	E27			250		6	920	360	AC	220 - 240	0.85	G	Yes	15000	25	2
LF023911603	E27 Cone 200x408 140Lm 6W 822 Smoke	3	E27			140		6	822	360	AC	220 - 240	0.85	G	Yes	15000	15	2

Big Flex Pine-Cone Premium



Figure 1



Figure 2



Figure 3

Article No	Description	Figure	Socket	Diameter (mm)	Total length (mm)	Lumen	Candela	Rated Wattage	Colour temp	Beam angle	Current type	Voltage	Power factor	Energy class	Dimmable	Lifespan (hrs)	Repl. wattage	Warranty (years)
LF023911709	E27 Pine-Cone 120x250 190Lm 4W 922	1	E27			190		4	922	360	AC	220 - 240	0.85	G	Yes	15000	20	2
LF023911705	E27 Pine-Cone 120x250 140Lm 4W 920 Gold	2	E27			140		4	920	360	AC	220 - 240	0.85	G	Yes	15000	15	2
LF023911703	E27 Pine-Cone 120x250 100Lm 4W 822 Smoke	3	E27			100		4	822	360	AC	220 - 240	0.85	G	Yes	15000	11	2

Big Flex



Figure 1



Figure 2



Figure 3



Figure 4

Article No	Description	Figure	Socket	Diameter (mm)	Total length (mm)	Lumen	Candela	Rated Wattage	Colour temp	Beam angle	Current type	Voltage	Power factor	Energy class	Dimmable	Lifespan (hrs)	Repl. wattage	Warranty (years)
LF023981105	E27 A165x300 250Lm 4W 820 Gold	1	E27			250		4	820	360	AC	220 - 240	0.85	G	Yes	15000	25	2
LF023981205	E27 G200x262 250Lm 4W 820 Gold	2	E27			250		4	820	360	AC	220 - 240	0.85	G	Yes	15000	25	2
LF023981305	E27 BT180x340 250Lm 4W 820 Gold	3	E27			250		4	820	360	AC	220 - 240	0.85	G	Yes	15000	25	2
LF023981405	E27 CT120x440 250Lm 4W 820 Gold	4	E27			250		4	820	360	AC	220 - 240	0.85	G	Yes	15000	25	2

Big Globe Premium



Figure 1



Figure 2



Figure 3



Figure 4



Figure 5

Article No	Description	Figure	Socket	Diameter (mm)	Total length (mm)	Lumen	Candela	Rated Wattage	Colour temp	Beam angle	Current type	Voltage	Power factor	Energy class	Dimmable	Lifespan (hrs)	Repl. wattage	Warranty (years)
LF023899902	E27 Spiral A165x300 470Lm 6W 925	1	E27			470		6	925	360	AC	220 - 240	0.85	G	Yes	25000	40	2
LF023899905	E27 Spiral A165x300 450Lm 6W 922 Gold	2	E27			450		6	922	360	AC	220 - 240	0.85	G	Yes	25000	39	2
LF023899802	E27 Spiral G200x262 470Lm 6W 925	3	E27			470		6	925	360	AC	220 - 240	0.85	G	Yes	25000	40	2
LF023899805	E27 Spiral G200x262 470Lm 6W 925 Gold	4	E27			470		6	925	360	AC	220 - 240	0.85	G	Yes	25000	40	2
LF023899102	E40 Spiral G300x420 970Lm 10W 925	5	E40			970		10	925	360	AC	220 - 240	0.80	F	Yes	25000	70	2

Big Flex R160 Premium

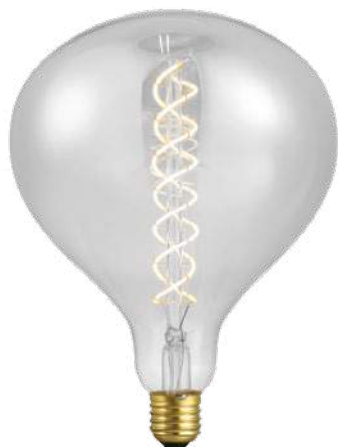


Figure 1



Figure 2



Figure 3

Article No	Description	Figure	Socket	Diameter (mm)	Total length (mm)	Lumen	Candela	Rated Wattage	Colour temp	Beam angle	Current type	Voltage	Power factor	Energy class	Dimmable	Lifespan (hrs)	Repl. wattage	Warranty (years)
LF023911809	E27 R160 160x215 320Lm 6W 922	1	E27			320		6	922	360	AC	220 - 240	0.85	G	Yes	15000	30	2
LF023911805	E27 R160 160x215 250Lm 6W 920 Gold	2	E27			250		6	920	360	AC	220 - 240	0.85	G	Yes	15000	25	2
LF023911803	E27 R160 160x215 140Lm 6W 822 Smoke	3	E27			140		6	822	360	AC	220 - 240	0.85	G	Yes	15000	15	2

Big Spiral Premium



Figure 1



Figure 2

Article No	Description	Figure	Socket	Diameter (mm)	Total length (mm)	Lumen	Candela	Rated Wattage	Colour temp	Beam angle	Current type	Voltage	Power factor	Energy class	Dimmable	Lifespan (hrs)	Repl. wattage	Warranty (years)
LF023899702	E27 Spiral CT120x440 470Lm 6W 925	1	E27			470		6	925	360	AC	220 - 240	0.85	G	Yes	25000	40	2
LF023899705	E27 Spiral CT120x440 470Lm 6W 925 Gold	2	E27			470		6	925	360	AC	220 - 240	0.85	G	Yes	25000	40	2

Flex GLS Premium



Figure 1



Figure 2

Article No	Description	Figure	Socket	Diameter (mm)	Total length (mm)	Lumen	Candela	Rated Wattage	Colour temp	Beam angle	Current type	Voltage	Power factor	Energy class	Dimmable	Lifespan (hrs)	Repl. wattage	Warranty (years)
LF023970309	E27 TR A60x105 190Lm 4W 922	1	E27			190		4	922	360	AC	220 - 240	0.85	G	Yes	15000	20	2
LF023971305	E27 TR A60x105 160Lm 4W 920 Gold	2	E27			160		4	920	360	AC	220 - 240	0.85	G	Yes	15000	17	2

FleX AX Tube Premium



Figure 1



Figure 2

Article No	Description	Figure	Socket	Diameter (mm)	Total length (mm)	Lumen	Candela	Rated Wattage	Colour temp	Beam angle	Current type	Voltage	Power factor	Energy class	Dimmable	Lifespan (hrs)	Repl. wattage	Warranty (years)
LF023922309	E27 AX T45x130 190Lm 4.5W 922	1	E27			190		4.5	922	360	AC	220 - 240	0.85	G	Yes	15000	20	2
LF023922305	E27 AX T45x130 160Lm 4W 920 Gold	2	E27			160		4.5	920	360	AC	220 - 240	0.85	G	Yes	15000	17	2

FleX Rustika Premium



Figure 1



Figure 2



Figure 3

Article No	Description	Figure	Socket	Diameter (mm)	Total length (mm)	Lumen	Candela	Rated Wattage	Colour temp	Beam angle	Current type	Voltage	Power factor	Energy class	Dimmable	Lifespan (hrs)	Repl. wattage	Warranty (years)
LF023960309	E27 AX ST64x140 190Lm 4W 922	1	E27			190		4	922	360	AC	220 - 240	0.85	G	Yes	15000	20	2
LF023961305	E27 AX ST64x140 160Lm 4W 920 Gold	2	E27			160		4	920	360	AC	220 - 240	0.85	G	Yes	15000	17	2
LF023960303	E27 AX ST64x140 100Lm 4W 922 Smoke	3	E27			80		4	922	360	AC	220 - 240	0.85	G	Yes	15000	9	2

Flex Globe Premium



Figure 1



Figure 2



Figure 3



Figure 4



Figure 5



Figure 6



Figure 7



Figure 8



Figure 9



Figure 10

Article No	Description	Figure	Socket	Diameter (mm)	Total length (mm)	Lumen	Candela	Rated Wattage	Colour temp	Beam angle	Current type	Voltage	Power factor	Energy class	Dimmable	Lifespan (hrs)	Repl. wattage	Warranty (years)
LF023980309	E27 AX G95x135 190Lm 4.5W 922	1	E27			190		4.5	922	360	AC	220 - 240	0.85	G	Yes	15000	20	2
LF023980409	E27 TR G95x135 190Lm 4.5W 922	2	E27			190		4.5	922	360	AC	220 - 240	0.85	G	Yes	15000	20	2
LF023980305	E27 AX G95x135 160Lm 4W 920 Gold	3	E27			160		4.5	920	360	AC	220 - 240	0.85	G	Yes	15000	17	2
LF023980405	E27 TR G95x135 140Lm 4.5W 920 Gold	4	E27			140		4.5	920	360	AC	220 - 240	0.85	G	Yes	15000	15	2
LF023980303	E27 AX G95x135 100Lm 4.5W 922 Smoke	5	E27			100		4.5	922	360	AC	220 - 240	0.85	G	Yes	15000	11	2
LF023925309	E27 AX G125x180 190Lm 4W 922	6	E27			190		4	922	360	AC	220 - 240	0.85	G	Yes	15000	20	2
LF023925409	E27 TR G125x180 190Lm 4.5W 922	7	E27			190		4.5	922	360	AC	220 - 240	0.85	G	Yes	15000	20	2
LF023925305	E27 AX G125x180 140Lm 4W 920 Gold	8	E27			160		4	920	360	AC	220 - 240	0.85	G	Yes	15000	17	2
LF023925405	E27 TR G125x180 140Lm 4.5W 922 Gold	9	E27			140		4.5	922	360	AC	220 - 240	0.85	G	Yes	15000	15	2
LF023925303	E27 AX G125x180 100Lm 4.5W 922 Smoke	10	E27			100		4.5	922	360	AC	220 - 240	0.85	G	Yes	15000	11	2

FleX Double Helix



Figure 1



Figure 2



Figure 3



Figure 4



Figure 5



Figure 6

Article No	Description	Figure	Socket	Diameter (mm)	Total length (mm)	Lumen	Candela	Rated Wattage	Colour temp	Beam angle	Current type	Voltage	Power factor	Energy class	Dimmable	Lifespan (hrs)	Repl. wattage	Warranty (years)
LF023960105	E27 DH ST64x140 320Lm 5W 820 Gold	1	E27			320		5	820	360	AC	220 - 240	0.75	G	Yes	15000	30	2
LF023922105	E27 DH T45x110 200Lm 5W 820 Gold	2	E27			200		5	820	360	AC	220 - 240	0.75	G	Yes	15000	21	2
LF023980105	E27 DH G95x135 300Lm 5W 820 Gold	3	E27			300		5	820	360	AC	220 - 240	0.85	G	Yes	15000	28	2
LF023925105	E27 DH G125x180 300Lm 5W 820 Gold	4	E27			300		5	820	360	AC	220 - 240	0.85	G	Yes	15000	28	2
L279514003	E27 DH G95x135 120Lm 5W 822 Smoke	5	E27			120		5	822	360	AC	220 - 240	0.85	G	Yes	15000	13	2
L272514003	E27 DH G125x180 120Lm 5W 822 Smoke	6	E27			120		5	822	360	AC	220 - 240	0.85	G	Yes	15000	13	2

FleX Double Loop Helix



Figure 1

Article No	Description	Figure	Socket	Diameter (mm)	Total length (mm)	Lumen	Candela	Rated Wattage	Colour temp	Beam angle	Current type	Voltage	Power factor	Energy class	Dimmable	Lifespan (hrs)	Repl. wattage	Warranty (years)
LF023960205	E27 DL ST64x140 300Lm 5W 820 Gold	1	E27			300		5	820	360	AC	220 - 240	0.75	G	Yes	15000	28	2

Flex Globe Colored Premium



Figure 1



Figure 2



Figure 3



Figure 4



Figure 5

Article No	Description	Figure	Socket	Diameter (mm)	Total length (mm)	Lumen	Candela	Rated Wattage	Colour temp	Beam angle	Current type	Voltage	Power factor	Energy class	Dimmable	Lifespan (hrs)	Repl. wattage	Warranty (years)
LF023925002	E27 TR G125x180 140Lm 4W Red	1	E27			140		4	922	360	AC	220 - 240	0.85	G	Yes	15000	15	2
LF023925003	E27 TR G125x180 140Lm 4W Green	2	E27			140		4	922	360	AC	220 - 240	0.85	G	Yes	15000	15	2
LF023925006	E27 TR G125x180 140Lm 4W Blue	3	E27			140		4	922	360	AC	220 - 240	0.85	G	Yes	15000	15	2
LF023925010	E27 TR G125x180 140Lm 4W Purple	4	E27			140		4	922	360	AC	220 - 240	0.85	G	Yes	15000	15	2
LF023925005	E27 TR G125x180 140Lm 4W Yellow	5	E27			140		4	922	360	AC	220 - 240	0.85	G	Yes	15000	15	2



FleX Tube Premium



Figure 1



Figure 2



Figure 3

Article No	Description	Figure	Socket	Diameter (mm)	Total length (mm)	Lumen	Candela	Rated Wattage	Colour temp	Beam angle	Current type	Voltage	Power factor	Energy class	Dimmable	Lifespan (hrs)	Repl. wattage	Warranty (years)
LF023930101	E27 T30x320 250Lm 4.5W 925 Frost	1	E27			250		4.5	925	360	AC	220 - 240	0.85	G	Yes	15000	25	2
LF023930201	E27 T30x520 350Lm 6W 925 Frost	2	E27			350		6	925	360	AC	220 - 240	0.85	G	Yes	15000	32	2
LF023930301	E27 T30x670 350Lm 6W 925 Frost	3	E27			350		6	925	360	AC	220 - 240	0.85	G	Yes	15000	32	2



Colorenta Premium



Figure 1



Figure 2



Figure 3



Figure 4

Article No	Description	Figure	Socket	Diameter (mm)	Total length (mm)	Lumen	Candela	Rated Wattage	Colour temp	Beam angle	Current type	Voltage	Power factor	Energy class	Dimmable	Lifespan (hrs)	Repl. wattage	Warranty (years)
LF024116588	E27 T36x300 470Lm 6.5W 925 Matt White	1	E27			470		6.5	925	360	AC	220 - 240	0.8	G	Yes	25000	40	2
LF024106402	E27 T38x315 470Lm 5.5W 925 (6xline)	2	E27			470		5.5	925	360	AC	220 - 240	0.9	F	Yes	25000	40	2
LF024107809	E27 T38x315 470Lm 6.5W 922 (2x3 line)	3	E27			470		6.5	922	360	AC	220 - 240	0.9	G	Yes	25000	40	2
LF024107808	E27 T38x315 470Lm 6.5W 925 Opal	4	E27			470		6.5	925	360	AC	220 - 240	0.9	G	Yes	25000	40	2
LF024107888	E27 T38x315 470Lm 6.5W 925 Matt White	4	E27			470		6.5	925	360	AC	220 - 240	0.9	G	Yes	25000	40	2

Globe G80 Premium



Figure 1



Figure 2



Figure 3



Figure 4



Figure 5

Article No	Description	Figure	Socket	Diameter (mm)	Total length (mm)	Lumen	Candela	Rated Wattage	Colour temp	Beam angle	Current type	Voltage	Power factor	Energy class	Dimmable	Lifespan (hrs)	Repl. wattage	Warranty (years)
LF023810302	E27 G80x120 320Lm 4W 925	1	E27			320		4	925	360	AC	220 - 240	0.9	G	Yes	25000	30	2
LF023815502	E27 G80x120 470Lm 5.5W 925 Flicker Free	2	E27			470		5.5	925	360	AC	220 - 240	0.8	F	Yes	25000	40	2
LF023815505	E27 G80x120 400Lm 6.5W 920 Gold	3	E27			400		6.5	920	360	AC	220 - 240	0.9	G	Yes	25000	35	2
LF023815505-1	E27 G80x120 520Lm 8W 922 Gold	4	E27			520		8	922	360	AC	220 - 240	0.9	G	Yes	25000	43	2
LF023810308	E27 G80x120 320Lm 4W 925 Opal	5	E27			320		4	925	360	AC	220 - 240	0.9	G	Yes	25000	30	2

Globe G95



Figure 4

Article No	Description	Figure	Socket	Diameter (mm)	Total length (mm)	Lumen	Candela	Rated Wattage	Colour temp	Beam angle	Current type	Voltage	Power factor	Energy class	Dimmable	Lifespan (hrs)	Repl. wattage	Warranty (years)
L279535005	E27 G95x135 350Lm 4W 822 Gold	1	E27			350		4	822	360	AC	220 - 240	0.8	F	Yes	15000	32	2

Globe G95 Premium



Figure 1



Figure 2



Figure 3



Figure 4



Figure 5

Article No	Description	Figure	Socket	Diameter (mm)	Total length (mm)	Lumen	Candela	Rated Wattage	Colour temp	Beam angle	Current type	Voltage	Power factor	Energy class	Dimmable	Lifespan (hrs)	Repl. wattage	Warranty (years)
LF023880309	E27 G95x135 250Lm 4W 922	1	E27			250		4	922	360	AC	220 - 240	0.9	G	Yes	25000	25	2
LF023880302	E27 G95x135 320Lm 4W 925	1	E27			320		4	925	360	AC	220 - 240	0.9	G	Yes	25000	30	2
LF023880602	E27 G95x135 470Lm 5.5W 925	2	E27			470		5.5	925	360	AC	220 - 240	0.9	F	Yes	25000	40	2
LF023880603	E27 G95x135 400Lm 6.5W 918	3	E27			400		6.5	918	360	AC	220 - 240	0.9	G	Yes	25000	35	2
LF023881602	E27 G95x135 470Lm 5.5W 925 L-Stick	3	E27			470		5.5	925	360	AC	220 - 240	0.9	F	Yes	25000	40	2
LF023881605	E27 G95x135 400Lm 5.5W 920 Gold	4	E27			400		5.5	920	360	AC	220 - 240	0.8	G	Yes	25000	35	2
LF023880308	E27 G95x135 250Lm 4W 925 Opal	5	E27			250		4	925	360	AC	220 - 240	0.9	G	Yes	25000	25	2
LF023880608	E27 G95x135 400Lm 5.5W 925 Opal	5	E27			400		5.5	925	360	AC	220 - 240	0.9	G	Yes	25000	35	2

Globe G125



Figure 1



Figure 2

Article No	Description	Figure	Socket	Diameter (mm)	Total length (mm)	Lumen	Candela	Rated Wattage	Colour temp	Beam angle	Current type	Voltage	Power factor	Energy class	Dimmable	Lifespan (hrs)	Repl. wattage	Warranty (years)
L272532927	E27 G125x180 450Lm 4.5W 827	1	E27			450		4.5	827	360	AC	230	0.8	F	Yes	15000	39	2
L272575927	E27 G125x180 810Lm 8W 827	2	E27			810		8	827	360	AC	230	0.8	F	Yes	15000	60	2

Globe G125 Premium



Figure 1



Figure 2



Figure 3



Figure 4



Figure 5



Figure 6



Figure 7



Figure 8



Figure 9

Article No	Description	Figure	Socket	Diameter (mm)	Total length (mm)	Lumen	Candela	Rated Wattage	Colour temp	Beam angle	Current type	Voltage	Power factor	Energy class	Dimmable	Lifespan (hrs)	Repl. wattage	Warranty (years)
LF023825309	E27 G125x180 250Lm 4W 922	1	E27			250		4	922	360	AC	220 - 240	0.9	G	Yes	25000	25	2
LF023825302	E27 G125x180 320Lm 4W 925	1	E27			320		4	925	360	AC	220 - 240	0.9	G	Yes	25000	30	2
LF023825609	E27 G125x180 400Lm 5.5W 922	2	E27			400		5.5	922	360	AC	220 - 240	0.9	G	Yes	25000	35	2
LF023825709	E27 G125x180 470Lm 6.5W 922	3	E27			470		6.5	922	360	AC	220 - 240	0.9	G	Yes	25000	40	2
LF023825509	E27 G125x180 470Lm 6.5W 922 L-Stick	4	E27			470		6.5	922	360	AC	220 - 240	0.9	G	Yes	25000	40	2
LF023825802	E27 G125x180 550Lm 6.5W 925	3	E27			550		6.5	925	360	AC	220 - 240	0.9	F	Yes	25000	45	2
LF023825809	E27 G125x180 550Lm 8W 922	5	E27			550		8	922	360	AC	220 - 240	0.85	G	Yes	25000	45	2
LF023825305	E27 G125x180 250Lm 4W 920 Gold	6	E27			250		4	920	360	AC	220 - 240	0.9	G	Yes	25000	25	2
LF023825655-1	E27 G125x180 520Lm 8W 922 Gold	7	E27			520		8	922	360	AC	220 - 240	0.85	G	Yes	25000	43	2
LF023825655	E27 G125x180 550Lm 8W 920 Gold	8	E27			550		8	920	360	AC	220 - 240	0.85	G	Yes	25000	45	2
LF023825308	E27 G125x180 320Lm 4W 925 Opal	9	E27			320		4	925	360	AC	220 - 240	0.9	G	Yes	25000	30	2
LF023825608	E27 G125x180 400Lm 5.5W 925 Opal	9	E27			400		5.5	925	360	AC	220 - 240	0.9	G	Yes	25000	35	2
LF023825808	E27 G125x180 550Lm 6.5W 925 Opal	9	E27			550		6.5	925	360	AC	220 - 240	0.9	F	Yes	25000	45	2
LF023825800	E27 G125x180 320Lm 6.5W 918 Champ	10	E27			320		6.5	918	360	AC	220 - 240	0.8	G	Yes	25000	30	2

Globe Top-Mirror Premium



Figure 1



Figure 2



Figure 3



Figure 4



Figure 5



Figure 6



Figure 7

Article No	Description	Figure	Socket	Diameter (mm)	Total length (mm)	Lumen	Candela	Rated Wattage	Colour temp	Beam angle	Current type	Voltage	Power factor	Energy class	Dimmable	Lifespan (hrs)	Repl. wattage	Warranty (years)
LF023880812	E27 Top Mirror G95xx135 470Lm 6.5W 925 Silver	1	E27			470		6.5	925	360	AC	220 - 240	0.9	G	Yes	25000	40	2
LF023880822	E27 Top Mirror G95x135 470Lm 6.5W 925 Gold	2	E27			470		6.5	925	360	AC	220 - 240	0.9	G	Yes	25000	40	2
LF023825812	E27 Top Mirror G125x180 470Lm 6.5W 925 Silver	3	E27			470		6.5	925	360	AC	220 - 240	0.9	G	Yes	25000	40	2
LF023825822	E27 Top Mirror G125x180 470Lm 6.5W 925 Gold	4	E27			470		6.5	925	360	AC	220 - 240	0.9	G	Yes	25000	40	2
LF023825832	E27 Top Mirror G125x180 470Lm 6.5W 925 White	5	E27			470		6.5	925	360	AC	220 - 240	0.9	G	Yes	25000	40	2
LF023825842	E27 Top Mirror G125x180 470Lm 6.5W 925 Grey	6	E27			470		6.5	925	360	AC	220 - 240	0.9	G	Yes	25000	40	2
LF023825852	E27 Top Mirror G125x180 470Lm 6.5W 925 Black	7	E27			470		6.5	925	360	AC	220 - 240	0.9	G	Yes	25000	40	2



Globe Top-Mirror



Figure 1



Figure 2



Figure 3



Figure 4

Article No	Description	Figure	Socket	Diameter (mm)	Total length (mm)	Lumen	Candela	Rated Wattage	Colour temp	Beam angle	Current type	Voltage	Power factor	Energy class	Dimmable	Lifespan (hrs)	Repl. wattage	Warranty (years)
L279029012	E27 Top Mirror G95x135 350Lm 4W 825 Silver	1	E27			350		4	825	360	AC	220 - 240	0.9	F	Yes	15000	32	2
L279029022	E27 Top Mirror G95x135 350Lm 4W 825 Gold	2	E27			350		4	825	360	AC	220 - 240	0.9	F	Yes	15000	32	2
L272529012	E27 Top Mirror G125x180 350Lm 4W 825 Silver	3	E27			350		4	825	360	AC	220 - 240	0.9	F	Yes	15000	32	2
L272529022	E27 Top Mirror G125x180 350Lm 4W 825 Gold	4	E27			350		4	825	360	AC	220 - 240	0.9	F	Yes	15000	32	2



TOP MIRRORS

Decorate your interior
with a soft warm glow.
Dimmable and CRI >90

Globe G125 Ice Premium



Figure 1



Figure 2

Article No	Description	Figure	Socket	Diameter (mm)	Total length (mm)	Lumen	Candela	Rated Wattage	Colour temp	Beam angle	Current type	Voltage	Power factor	Energy class	Dimmable	Lifespan (hrs)	Repl. wattage	Warranty (years)
LF023825909	E27 G125x180 250Lm 4W 922 Ice	1	E27			250		4	922	360	AC	220 - 240	0.9	G	Yes	25000	25	2
LF023825905	E27 G125x180 200Lm 4W 920 Ice	2	E27			200		4	920	360	AC	220 - 240	0.9	G	Yes	25000	21	2



Globe Special Premium



Figure 1



Figure 2

Article No	Description	Figure	Socket	Diameter (mm)	Total length (mm)	Lumen	Candela	Rated Wattage	Colour temp	Beam angle	Current type	Voltage	Power factor	Energy class	Dimmable	Lifespan (hrs)	Repl. wattage	Warranty (years)
LF024119609	E27 Double G125x180 720Lm 8.5W 922	1	E27			720		8.5	922	360	AC	220 - 240	0.85	F	Yes	25000	55	2
LF024116609	E27 Deco G125x180 470Lm 6.5W 922	2	E27			470		6.5	922	360	AC	220 - 240	0.85	G	Yes	25000	40	2

Rustika Premium



Figure 1



Figure 2



Figure 3



Figure 4



Figure 5



Figure 6



Figure 7



Figure 8

Article No	Description	Figure	Socket	Diameter (mm)	Total length (mm)	Lumen	Candela	Rated Wattage	Colour temp	Beam angle	Current type	Voltage	Power factor	Energy class	Dimmable	Lifespan (hrs)	Repl. wattage	Warranty (years)
LF023860209	E27 ST64x143 190Lm 2.5W 922	1	E27			190		2.5	922	360	AC	220 - 240	0.9	G	Yes	25000	20	2
LF023860302	E27 ST58x130 320Lm 4W 925	2	E27			320		4	925	360	AC	220 - 240	0.9	G	Yes	25000	30	2
LF023860409	E27 ST64x143 320Lm 4.5W 922	3	E27			320		4.5	922	360	AC	220 - 240	0.9	G	Yes	25000	30	2
LF023860603	E27 ST64x143 400Lm 6.5W 918	4	E27			400		6.5	918	360	AC	220 - 240	0.9	G	Yes	25000	35	2
LF023860502	E27 ST58x130 470Lm 5.5W 925	5	E27			470		5.5	925	360	AC	220 - 240	0.9	F	Yes	25000	40	2
LF023860609	E27 ST64x143 470Lm 6.5W 922	4	E27			470		6.5	922	360	AC	220 - 240	0.9	G	Yes	25000	40	2
LF023860505	E27 ST58x130 400Lm 5.5W 920 Gold	6	E27			400		5.5	920	360	AC	220 - 240	0.9	G	Yes	25000	35	2
LF023860615	E27 ST62x140 550Lm 6.5W 922 Gold	7	E27			550		6.5	922	360	AC	220 - 240	0.8	F	Yes	25000	45	2
LF023860025	E27 ST64x143 600Lm 6.5W 925 Gold	7	E27			600		6.5	925	360	AC	220 - 240	0.8	F	Yes	25000	48	2
LF024060507	Ba22d ST58x130 550Lm 6.5W 927	8	Ba22d			550		6.5	927	360	AC	220 - 240	0.85	F	Yes	25000	45	2

Rustika



Figure 1

Article No	Description	Figure	Socket	Diameter (mm)	Total length (mm)	Lumen	Candela	Rated Wattage	Colour temp	Beam angle	Current type	Voltage	Power factor	Energy class	Dimmable	Lifespan (hrs)	Repl. wattage	Warranty (years)
L276464005	E27 ST64x140 640Lm 8W 822 Gold	1	E27			640		8	822	360	AC	230	0.85	G	Yes	15000	50	2
L276410922	E27 ST64x140 810Lm 10W 820 Gold	1	E27			810		10	820	360	AC	230	0.85	G	Yes	15000	60	2



Matt White Premium



Figure 1



Figure 2



Figure 3



Figure 4



Figure 5



Figure 6



Figure 7



Figure 8



Figure 9



Figure 10



Figure 11

Article No	Description	Figure	Socket	Diameter (mm)	Total length (mm)	Lumen	Candela	Rated Wattage	Colour temp	Beam angle	Current type	Voltage	Power factor	Energy class	Dimmable	Lifespan (hrs)	Repl. wattage	Warranty (years)
LF023800188	E27 R180x190 550Lm 6W 925 Matt White	1	E27			550		6	925	360	AC	220 - 240	0.85	F	Yes	25000	45	2
LF023800288	E27 T0120x198 550Lm 6W 925 Matt White	2	E27			550		6	925	360	AC	220 - 240	0.85	F	Yes	25000	45	2
LF023800388	E27 G150x200 550Lm 6W 925 Matt White	3	E27			550		6	925	360	AC	220 - 240	0.85	F	Yes	25000	45	2
LF023800488	E27 ST125x176 550Lm 6W 925 Matt White	4	E27			550		6	925	360	AC	220 - 240	0.85	F	Yes	25000	45	2
LF023800588	E27 R125x150 550Lm 6W 925 Matt White	5	E27			550		6	925	360	AC	220 - 240	0.85	F	Yes	25000	45	2
LF023800688	E27 UF200x152 550Lm 6W 925 Matt White	6	E27			550		6	925	360	AC	220 - 240	0.85	F	Yes	25000	45	2
LF023800788	E27 TS125x173 550Lm 6W 925 Matt White	7	E27			550		6	925	360	AC	220 - 240	0.85	F	Yes	25000	45	2
LF023800888	E27 V150x190 550Lm 6W 925 Matt White	8	E27			550		6	925	360	AC	220 - 240	0.85	F	Yes	25000	45	2
LF023800988	E27 R160x215 550Lm 6W 925 Matt White	9	E27			550		6	925	360	AC	220 - 240	0.85	F	Yes	25000	45	2
LF023880688	E27 G95x135 400Lm 5.5W 925 Matt White	10	E27			400		5.5	925	360	AC	220 - 240	0.9	G	Yes	25000	35	2
LF023825688	E27 G125x180 400Lm 5.5W 925 Matt White	11	E27			400		5.5	925	360	AC	220 - 240	0.9	G	Yes	25000	35	2

Tubular Deco Premium



Figure 1



Figure 2

Article No	Description	Figure	Socket	Diameter (mm)	Total length (mm)	Lumen	Candela	Rated Wattage	Colour temp	Beam angle	Current type	Voltage	Power factor	Energy class	Dimmable	Lifespan (hrs)	Repl. wattage	Warranty (years)
LF023833302	E27 T45x130 550Lm 6.5W 925	1	E27			550		6.5	925	360	AC	220 - 240	0.9	F	Yes	25000	45	2
LF023822305	E27 T45x106 250Lm 4W 923 Gold	2	E27			250		4	923	360	AC	220 - 240	0.9	G	Yes	25000	25	2

Special Premium



Figure 1



Figure 2



Figure 3



Figure 4

Article No	Description	Figure	Socket	Diameter (mm)	Total length (mm)	Lumen	Candela	Rated Wattage	Colour temp	Beam angle	Current type	Voltage	Power factor	Energy class	Dimmable	Lifespan (hrs)	Repl. wattage	Warranty (years)
L024104509	E14 Giant Candle C45x130 280Lm 4W 922	1	E14			280		4	922	360	AC	220 - 240	0.9	G	Yes	25000	27	2
L024105509	E14 Hexagon 32x118 260Lm 4W 922	2	E14			260		4	922	360	AC	220 - 240	0.9	G	Yes	25000	26	2
LF023801502	E27 S-Shape S45x80 140Lm 1.5W 925	3	E27			140		1.5	925	360	AC	220 - 240	0.85	F	Yes	25000	15	2
LF024102409	E27 Diamond 120x156 400Lm 5.5W 922	4	E27			400		5.5	922	360	AC	220 - 240	0.85	G	Yes	25000	35	2



Vintage



Figure 1



Figure 2



Figure 3



Figure 4



Figure 5



Figure 6



Figure 7



Figure 8



Figure 9



Figure 10



Figure 11

Article No	Description	Figure	Socket	Diameter (mm)	Total length (mm)	Lumen	Candela	Rated Wattage	Colour temp	Beam angle	Current type	Voltage	Power factor	Energy class	Dimmable	Lifespan (hrs)	Repl. wattage	Warranty (years)
L140013000	E14 Vintage T30x70 65Lm 2.5W 820	1	E14			65		2.5	818 - 822	360	AC	220 - 240	0.9	G	Yes	15000	7	2
L140013500	E14 Vintage C35x103 65Lm 2.5W 820	2	E14			65		2.5	818 - 822	360	AC	220 - 240	0.9	G	Yes	15000	7	2
L270016000	E27 Vintage A60x110 65Lm 2.5W 820	3	E27			65		2.5	818 - 822	360	AC	220 - 240	0.9	G	Yes	15000	7	2
L270016005	E27 Vintage A60x110 65Lm 2.5W 818 Gold	4	E27			65		2.5	816 - 819	360	AC	220 - 240	0.9	G	Yes	15000	7	2
L270016400	E27 Vintage ST64x145 140Lm 3.5W 820	5	E27			140		3.5	818 - 822	360	AC	220 - 240	0.9	G	Yes	15000	15	2
L270016405	E27 Vintage ST64x145 100Lm 3.5W 818 Gold	6	E27			100		3.5	816 - 819	360	AC	220 - 240	0.9	G	Yes	15000	11	2
L270019500	E27 Vintage G95x145 140Lm 3.5W 820	7	E27			140		3.5	818 - 822	360	AC	220 - 240	0.9	G	Yes	15000	15	2
L270019505	E27 Vintage G95x145 100Lm 3.5W 818 Gold	8	E27			100		3.5	816 - 819	360	AC	220 - 240	0.9	G	Yes	15000	11	2
L270012500	E27 Vintage G125x145 140Lm 3.5W 820	9	E27			140		3.5	818 - 822	360	AC	220 - 240	0.9	G	Yes	15000	15	2
L270013000	E27 Vintage T30x185 100Lm 2.5W 820	10	E27			100		2.5	818 - 822	360	AC	220 - 240	0.9	G	Yes	15000	11	2
L270013005	E27 Vintage T30x185 50Lm 2.5W 818 Gold	11	E27			50		2.5	816 - 819	360	AC	220 - 240	0.9	G	Yes	15000	6	2



VINTAGE SERIES

This dimmable nostalgic series replace the traditional carbon filament bulbs.



Candle Premium



Figure 1



Figure 2



Figure 3



Figure 4



Figure 5



Figure 6



Figure 7



Figure 8



Figure 9



Figure 10



Figure 11

Article No	Description	Figure	Socket	Diameter (mm)	Total length (mm)	Lumen	Candela	Rated Wattage	Colour temp	Beam angle	Current type	Voltage	Power factor	Energy class	Dimmable	Lifespan (hrs)	Repl. wattage	Warranty (years)
LF023841509	E14 C35x100 120Lm 2W 922	1	E14			120		2	922	360	AC	220 - 240	0.85	G	Yes	25000	13	2
LF023841502	E14 C35x100 150Lm 2W 925	1	E14			150		2	925	360	AC	220 - 240	0.85	G	Yes	25000	16	2
LF023840309	E14 C35x100 250Lm 4W 922	2	E14			250		4	922	360	AC	220 - 240	0.9	G	Yes	25000	25	2
LF023840302	E14 C35x100 320Lm 4W 925	2	E14			320		4	925	360	AC	220 - 240	0.9	G	Yes	25000	30	2
LF023841505-1	E14 C35x100 100Lm 2W 922 Gold	3	E14			100		2	922	360	AC	220 - 240	0.85	G	Yes	25000	11	2
LF023840305-1	E14 C35x100 250Lm 4W 922 Gold	4	E14			250		4	922	360	AC	220 - 240	0.9	G	Yes	25000	25	2
LF023840308	E14 C35x100 250Lm 4W 925 Opal	5	E14			250		4	925	360	AC	220 - 240	0.9	G	Yes	25000	25	2
LF023861302	E27 C35x100 320Lm 4W 925	6	E27			320		4	925	360	AC	220 - 240	0.8	G	Yes	25000	30	2
LF024040302	Ba15d C35x100 320Lm 4W 925	7	Ba15d			320		4	925	360	AC	220 - 240	0.9	G	Yes	25000	30	2
LF024040301	Ba15d C35x100 320Lm 4W 925 Frost	8	Ba15d			320		4	925	360	AC	220 - 240	0.9	G	Yes	25000	30	2
L024061502	Ba22d C35x100 150Lm 1.5W 925	9	Ba22d			150		1.5	925	360	AC	220 - 240	0.5	F	Yes	25000	16	2
LF024061302	Ba22d C35x100 320Lm 4W 925	10	Ba22d			320		4	925	360	AC	220 - 240	0.9	G	Yes	25000	30	2
LF024061301	Ba22d C35x100 320Lm 4W 925 Frost	11	Ba22d			320		4	925	360	AC	220 - 240	0.9	G	Yes	25000	30	2

Candle



Figure 1



Figure 2



Figure 3



Figure 4

Article No	Description	Figure	Socket	Diameter (mm)	Total length (mm)	Lumen	Candela	Rated Wattage	Colour temp	Beam angle	Current type	Voltage	Power factor	Energy class	Dimmable	Lifespan (hrs)	Repl. wattage	Warranty (years)
L149115927	E14 C35x100 160Lm 2W 827	1	E14			160		2	827	360	AC	230	0.8	G	Yes	15000	17	2
L149124922-1	E14 C35x100 320Lm 4W 822	2	E14			320		4	822	360	AC	230	0.8	G	Yes	15000	30	2
L149150827	E14 C35x100 450Lm 5W 827	2	E14			450		5	827	360	AC	220 - 240	0.85	F	Yes	15000	39	2
L149131827	E14 C35x100 250Lm 3W 827 Milky	3	E14			250		3	827	360	AC	230	0.8	G	Yes	15000	25	2
L149151827	E14 C35x100 470Lm 5W 827 Milky	3	E14			470		5	827	360	AC	220 - 240	0.9	F	Yes	15000	40	2
L159124927	Ba15d C35x100 400Lm 4W 827	4	Ba15d			400		4	827	360	AC	230	0.85	F	Yes	15000	35	2

Tip Candle Premium



Figure 1



Figure 2



Figure 3



Figure 4

Article No	Description	Figure	Socket	Diameter (mm)	Total length (mm)	Lumen	Candela	Rated Wattage	Colour temp	Beam angle	Current type	Voltage	Power factor	Energy class	Dimmable	Lifespan (hrs)	Repl. wattage	Warranty (years)
LF023851502	E14 Tip C35x120 140Lm 1.5W 925	1	E14			140		1.5	925	360	AC	220 - 240	0.85	F	Yes	25000	15	2
LF023850309	E14 Tip C35x120 250Lm 4W 922	2	E14			250		4	922	360	AC	220 - 240	0.8	G	Yes	25000	25	2
LF023850302	E14 Tip C35x120 320Lm 4W 925	2	E14			320		4	925	360	AC	220 - 240	0.8	G	Yes	25000	30	2
LF023850301	E14 Tip C35x120 320Lm 4W 925 Frost	3	E14			320		4	925	360	AC	220 - 240	0.8	G	Yes	25000	30	2
LF023859515	E14 Tip C35x120 100Lm 2W 922 Gold	4	E14			100		2	922	360	AC	220 - 240	0.9	G	Yes	25000	11	2

Tip Candle



Figure 1



Figure 2



Figure 3



Figure 4



Figure 5



Figure 6

Article No	Description	Figure	Socket	Diameter (mm)	Total length (mm)	Lumen	Candela	Rated Wattage	Colour temp	Beam angle	Current type	Voltage	Power factor	Energy class	Dimmable	Lifespan (hrs)	Repl. wattage	Warranty (years)
L149315927	E14 Tip C35x120 160Lm 2W 827	1	E14			160		2	827	360	AC	230	0.85	G	Yes	15000	17	2
L149324021	E14 Tip C35x120 270Lm 4W 821	2	E14			270		4	821	360	AC	230	0.90	G	Yes	15000	26	2
L149330927	E14 C35x120 400Lm 4W 827	3	E14			400		4	827	360	AC	230	0.90	F	Yes	15000	35	2
L149347027	E14 C35x120 470Lm 5W 827	3	E14			470		5	827	360	AC	230	0.90	F	Yes	15000	40	2
L149316927	E14 Tip C35x120 160Lm 2W 827 Frost	4	E14			160		2	827	360	AC	230	0.8	G	Yes	15000	17	2
L149351827	E14 Tip C35x120 470Lm 5W 827 Milky	5	E14			470		5	827	360	AC	220 - 240	0.9	F	Yes	15000	40	2
L149332005	E14 C35x120 360Lm 4W 825 Gold	6	E14			360		4	825	360	AC	230	0.90	F	Yes	15000	33	2

Twisted Candle Premium



Figure 1



Figure 2



Figure 3



Figure 4



Figure 5

Article No	Description	Figure	Socket	Diameter (mm)	Total length (mm)	Lumen	Candela	Rated Wattage	Colour temp	Beam angle	Current type	Voltage	Power factor	Energy class	Dimmable	Lifespan (hrs)	Repl. wattage	Warranty (years)
LF023811509	E14 Twisted C35X100 120Lm 2W 922	1	E14			120		2	922	360	AC	220 - 240	0.85	G	Yes	25000	13	2
LF023810309	E14 Twisted C35X100 250Lm 4W 922	2	E14			250		4	922	360	AC	220 - 240	0.9	G	Yes	25000	25	2
LF023810301	E14 Twisted C35X100 320Lm 4W 925 Frost	3	E14			320		4	925	360	AC	220 - 240	0.9	G	Yes	25000	30	2
LF023811505	E14 Twisted C35X100 140Lm 1.5W 920 Gold	4	E14			140		1.5	920	360	AC	220 - 240	0.8	F	Yes	25000	15	2
LF023810305-1	E14 Twisted C35X100 250Lm 4W 922 Gold	5	E14			250		4	922	360	AC	220 - 240	0.9	G	Yes	25000	25	2

Twisted Candle



Figure 1

Article No	Description	Figure	Socket	Diameter (mm)	Total length (mm)	Lumen	Candela	Rated Wattage	Colour temp	Beam angle	Current type	Voltage	Power factor	Energy class	Dimmable	Lifespan (hrs)	Repl. wattage	Warranty (years)
L149216027	E14 Twisted C35X100 160Lm 2W 827	1	E14			160		2	827	360	AC	220 - 240	0.85	G	Yes	15000	17	2

Ball E27 Premium



Figure 1



Figure 2



Figure 3



Figure 4



Figure 5

Article No	Description	Figure	Socket	Diameter (mm)	Total length (mm)	Lumen	Candela	Rated Wattage	Colour temp	Beam angle	Current type	Voltage	Power factor	Energy class	Dimmable	Lifespan (hrs)	Repl. wattage	Warranty (years)
LF023821509-1	E27 G45x75 120Lm 2W 922	1	E27			120		2	922	360	AC	220 - 240	0.75	G	Yes	25000	13	2
LF023821502	E27 G45x75 150Lm 2W 925	1	E27			150		2	925	360	AC	220 - 240	0.85	G	Yes	25000	16	2
LF023820309	E27 G45x75 250Lm 4W 922	2	E27			250		4	922	360	AC	220 - 240	0.9	G	Yes	25000	25	2
LF023820302	E27 G45x75 320Lm 4W 925	2	E27			320		4	925	360	AC	220 - 240	0.9	G	Yes	25000	30	2
LF023820301	E27 G45x75 320Lm 4W 925 Frost	3	E27			320		4	925	360	AC	220 - 240	0.9	G	Yes	25000	30	2
LF023820308	E27 G45x75 250Lm 4W 925 Opal	4	E27			250		4	925	360	AC	220 - 240	0.9	G	Yes	25000	25	2
LF023820305	E27 G45x75 250Lm 4W 922 Gold	5	E27			250		4	922	360	AC	220 - 240	0.9	G	Yes	25000	25	2

Ball E27



Figure 1



Figure 2



Figure 3



Figure 4



Figure 5

Article No	Description	Figure	Socket	Diameter (mm)	Total length (mm)	Lumen	Candela	Rated Wattage	Colour temp	Beam angle	Current type	Voltage	Power factor	Energy class	Dimmable	Lifespan (hrs)	Repl. wattage	Warranty (years)
L277215927-1	E27 G45x75 160Lm 2W 827	1	E27			160		2	827	360	AC	230	0.8	G	Yes	15000	17	2
L277230822	E27 G45x75 200Lm 3W 822	2	E27			200		3	822	360	AC	230	0.85	G	Yes	15000	21	2
L277230827	E27 G45x75 250Lm 3W 827	2	E27			250		3	827	360	AC	230	0.85	G	Yes	15000	25	2
L277225922	E27 G45x75 350Lm 4W 822	3	E27			350		4	822	360	AC	230	0.90	F	Yes	15000	32	2
L277250827	E27 G45x75 470Lm 5W 827	4	E27			470		5	827	360	AC	230	0.92	F	Yes	15000	40	2
L277231827	E27 G45x75 250Lm 3W 827 Milky	5	E27			250		3	827	360	AC	230	0.9	G	Yes	15000	25	2
L277251827	E27 G45x75 470Lm 5W 827 Milky	5	E27			470		5	827	360	AC	230	0.90	F	Yes	15000	40	2

Ball E14 Premium



Figure 1



Figure 2



Figure 3



Figure 4

Article No	Description	Figure	Socket	Diameter (mm)	Total length (mm)	Lumen	Candela	Rated Wattage	Colour temp	Beam angle	Current type	Voltage	Power factor	Energy class	Dimmable	Lifespan (hrs)	Repl. wattage	Warranty (years)
L277215927-1	E27 G45x75 160Lm 2W 827	1	E27			160		2	827	360	AC	230	0.8	G	Yes	15000	17	2
L277230822	E27 G45x75 200Lm 3W 822	2	E27			200		3	822	360	AC	230	0.85	G	Yes	15000	21	2
L277230827	E27 G45x75 250Lm 3W 827	2	E27			250		3	827	360	AC	230	0.85	G	Yes	15000	25	2
L277225922	E27 G45x75 350Lm 4W 822	3	E27			350		4	822	360	AC	230	0.90	F	Yes	15000	32	2
L277250827	E27 G45x75 470Lm 5W 827	4	E27			470		5	827	360	AC	230	0.92	F	Yes	15000	40	2
L277231827	E27 G45x75 250Lm 3W 827 Milky	5	E27			250		3	827	360	AC	230	0.9	G	Yes	15000	25	2
L277251827	E27 G45x75 470Lm 5W 827 Milky	5	E27			470		5	827	360	AC	230	0.90	F	Yes	15000	40	2

Ball E14



Figure 1



Figure 2



Figure 3

Article No	Description	Figure	Socket	Diameter (mm)	Total length (mm)	Lumen	Candela	Rated Wattage	Colour temp	Beam angle	Current type	Voltage	Power factor	Energy class	Dimmable	Lifespan (hrs)	Repl. wattage	Warranty (years)
L147225027	E14 G45x75 160Lm 2W 827	1	E14			160		2	827	360	AC	230	0.8	G	Yes	15000	17	2
L147225922	E14 G45x75 320Lm 4W 822	2	E14			320		4	822	360	AC	230	0.90	G	Yes	15000	30	2
L147250827	E14 G45x75 470Lm 5W 827	2	E14			470		5	827	360	AC	220 - 240	0.7	F	Yes	15000	40	2
L147251827	E14 G45x75 420Lm 5W 827 Milky	3	E14			420		5	827	360	AC	230	0.92	G	Yes	15000	37	2

Ball Ba15d Premium



Figure 1



Figure 2

Article No	Description	Figure	Socket	Diameter (mm)	Total length (mm)	Lumen	Candela	Rated Wattage	Colour temp	Beam angle	Current type	Voltage	Power factor	Energy class	Dimmable	Lifespan (hrs)	Repl. wattage	Warranty (years)
LF024030307	Ba15d G45x75 350Lm 4W 927	1	Ba15d			350		4	927	360	AC	220 - 240	0.9	F	Yes	25000	32	2
LF024031501	Ba15d G45x75 140Lm 1.5W 925 Frost	2	Ba15d			140		1.5	925	360	AC	220 - 240	0.8	F	Yes	25000	15	2
LF024030301	Ba15d G45x75 320Lm 4W 925 Frost	2	Ba15d			320		4	925	360	AC	220 - 240	0.9	G	Yes	25000	30	2

Ball Ba22d Premium



Figure 1

Article No	Description	Figure	Socket	Diameter (mm)	Total length (mm)	Lumen	Candela	Rated Wattage	Colour temp	Beam angle	Current type	Voltage	Power factor	Energy class	Dimmable	Lifespan (hrs)	Repl. wattage	Warranty (years)
LF024020302	Ba22d G45x75 320Lm 4W 925	1	Ba22d			320		4	925	360	AC	220 - 240	0.9	G	Yes	25000	30	2

Ball Ba22d



Figure 1



Figure 2

Article No	Description	Figure	Socket	Diameter (mm)	Total length (mm)	Lumen	Candela	Rated Wattage	Colour temp	Beam angle	Current type	Voltage	Power factor	Energy class	Dimmable	Lifespan (hrs)	Repl. wattage	Warranty (years)
L227250827	Ba22d G45x75 470Lm 5W 827	1	Ba22d			470		5	827	360	AC	230	0.92	F	Yes	15000	40	2
L227251827	Ba22d G45x75 470Lm 5W 827 Milky	2	Ba22d			470		5	827	360	AC	230	0.90	F	Yes	15000	40	2

General E27 Premium



Figure 1



Figure 2



Figure 3



Figure 4



Figure 5

Article No	Description	Figure	Socket	Diameter (mm)	Total length (mm)	Lumen	Candela	Rated Wattage	Colour temp	Beam angle	Current type	Voltage	Power factor	Energy class	Dimmable	Lifespan (hrs)	Repl. wattage	Warranty (years)
LF023870302	E27 A60x105 320Lm 4W 925	1	E27			320		4	925	360	AC	220 - 240	0.9	G	Yes	25000	30	2
LF023870509	E27 A60x105 400Lm 5.5W 922	2	E27			400		5.5	922	360	AC	220 - 240	0.9	G	Yes	25000	35	2
LF023870609	E27 A60x105 470Lm 6.5W 922	3	E27			470		6.5	922	360	AC	220 - 240	0.85	G	Yes	25000	40	2
LF023870602	E27 A60x105 550Lm 6.5W 925	3	E27			550		6.5	925	360	AC	220 - 240	0.85	F	Yes	25000	45	2
LF023870702	E27 A60x105 650Lm 8W 925	4	E27			650		8	925	360	AC	220 - 240	0.9	G	Yes	25000	51	2
LF023870308	E27 A60x105 250Lm 4W 925 Opal	5	E27			250		4	925	360	AC	220 - 240	0.9	G	Yes	25000	25	2
LF023870308-1	E27 A60x105 320Lm 4W 925 Opal	5	E27			320		4	925	360	AC	220 - 240	0.9	G	Yes	25000	30	2
LF023870688	E27 A60x105 470Lm 6W 925 Opal	5	E27			470		6	925	360	AC	220 - 240	0.9	G	Yes	25000	40	2
LF023870608-1	E27 A60x105 600Lm 8W 925 Opal	5	E27			600		8	925	360	AC	220 - 240	0.9	G	Yes	25000	48	2

General E27



Figure 1



Figure 2



Figure 3



Figure 4



Figure 5



Figure 6

Article No	Description	Figure	Socket	Diameter (mm)	Total length (mm)	Lumen	Candela	Rated Wattage	Colour temp	Beam angle	Current type	Voltage	Power factor	Energy class	Dimmable	Lifespan (hrs)	Repl. wattage	Warranty (years)
L276032922	E27 A60x105 320Lm 4W 822	1	E27			320		4	822	360	AC	230	0.85	G	Yes	15000	30	2
L276050827	E27 A60x105 470Lm 5W 827	2	E27			470		5	827	360	AC	230	0.92	F	Yes	15000	40	2
L276080822	E27 A60x105 740Lm 8W 822	3	E27			740		8	822	360	AC	230	0.75	F	Yes	15000	56	2
L276080827	E27 A60x105 806Lm 8W 827	3	E27			806		8	827	360	AC	230	0.75	F	Yes	15000	60	2
L276100927-1	E27 A60x105 1000Lm 8.5W 827	4	E27			1000		8.5	827	360	AC	230	0.85	E	Yes	15000	72	2
L276051827	E27 A60x105 470Lm 5W 827 Milky	5	E27			470		5	827	360	AC	230	0.92	F	Yes	15000	40	2
L276081827	E27 A60x105 806Lm 8W 827 Milky	5	E27			806		8	827	360	AC	230	0.75	F	Yes	15000	60	2
L276034005	E27 A60x105 400Lm 4W 825 Gold	6	E27			400		4	825	360	AC	230	0.90	F	Yes	15000	35	2

General Ba22d Premium



Figure 1



Figure 2



Figure 3



Figure 4

Article No	Description	Figure	Socket	Diameter (mm)	Total length (mm)	Lumen	Candela	Rated Wattage	Colour temp	Beam angle	Current type	Voltage	Power factor	Energy class	Dimmable	Lifespan (hrs)	Repl. wattage	Warranty (years)
LF024070302	Ba22d A60x105 320Lm 4W 925	1	Ba22d			320		4	925	360	AC	220 - 240	0.9	G	Yes	25000	30	2
L024070507	Ba22d A60x105 470Lm 5.5W 927	2	Ba22d			470		5.5	927	360	AC	220 - 240	0.9	F	Yes	25000	40	2
L024070602	Ba22d A60x105 520Lm 6.5W 925	3	Ba22d			520		6.5	925	360	AC	220 - 240	0.9	G	Yes	25000	43	2
L024070607	Ba22d A60x105 540Lm 6.5W 927	3	Ba22d			540		6.5	927	360	AC	220 - 240	0.9	G	Yes	25000	44	2
LF024070301	Ba22d A60x105 320Lm 4W 925 Frost	4	Ba22d			320		4	925	360	AC	220 - 240	0.9	G	Yes	25000	30	2
LF024070501	Ba22d A60x105 400Lm 5.5W 925 Frost	4	Ba22d			400		5.5	925	360	AC	220 - 240	0.9	G	Yes	25000	35	2

General Ba22d



Figure 1



Figure 2



Figure 3

Article No	Description	Figure	Socket	Diameter (mm)	Total length (mm)	Lumen	Candela	Rated Wattage	Colour temp	Beam angle	Current type	Voltage	Power factor	Energy class	Dimmable	Lifespan (hrs)	Repl. wattage	Warranty (years)
L226080827	Ba22d A60x105 806Lm 8W 827	1	Ba22d			806		8	827	360	AC	230	0.75	F	Yes	15000	60	2
L226081827	Ba22d A60x105 806Lm 8W 827 Milky Frosted	2	Ba22d			806		8	827	360	AC	230	0.75	F	Yes	15000	60	2
L226034005	Ba22d A60x105 400Lm 4W 825 Gold	3	Ba22d			400		4	825	360	AC	230	0.90	F	Yes	15000	35	2

Top Mirror Premium



Figure 1



Figure 2



Figure 3



Figure 4



Figure 5



Figure 6



Figure 7

Article No	Description	Figure	Socket	Diameter (mm)	Total length (mm)	Lumen	Candela	Rated Wattage	Colour temp	Beam angle	Current type	Voltage	Power factor	Energy class	Dimmable	Lifespan (hrs)	Repl. wattage	Warranty (years)
LF023890312	E27 Top Mirror A55x100 250Lm 4W 925 Silver	1	E27			250		4	925	360	AC	220 - 240	0.9	G	Yes	25000	25	2
LF023890512	E27 Top Mirror A60x105 400Lm 6.5W 925 Silver	2	E27			400		6.5	925	360	AC	220 - 240	0.9	G	Yes	25000	35	2
LF023891319	E27 Top Mirror A55x100 190Lm 4W 922 Gold	3	E27			190		4	922	360	AC	220 - 240	0.9	G	Yes	25000	20	2
LF023891312	E27 Top Mirror A55x100 250Lm 4W 925 Gold	3	E27			250		4	925	360	AC	220 - 240	0.9	G	Yes	25000	25	2
LF023870312	E14 Top Mirror G45x75 300Lm 4W 925 Silver	4	E14			300		4	925	360	AC	220 - 240	0.9	G	Yes	25000	28	2
LF023871312	E14 Top Mirror G45x75 250Lm 4W 925 Gold	5	E14			250		4	925	360	AC	220 - 240	0.9	G	Yes	25000	25	2
LF023880312	E27 Top Mirror G45x75 250Lm 4W 925 Silver	6	E27			250		4	925	360	AC	220 - 240	0.9	G	Yes	25000	25	2
LF023881312	E27 Top Mirror G45x75 300Lm 4W 925 Gold	7	E27			300		4	925	360	AC	220 - 240	0.9	G	Yes	25000	28	2

Top Mirror



Figure 1



Figure 2

Article No	Description	Figure	Socket	Diameter (mm)	Total length (mm)	Lumen	Candela	Rated Wattage	Colour temp	Beam angle	Current type	Voltage	Power factor	Energy class	Dimmable	Lifespan (hrs)	Repl. wattage	Warranty (years)
L147235012	E14 Top Mirror G45x75 350Lm 4W 825 Silver	1	E14			350		4	825	360	AC	230	0.9	F	Yes	15000	32	2
L277235012	E27 Top Mirror G45x75 350Lm 4W 825 Silver	2	E27			350		4	825	360	AC	230	0.9	F	Yes	15000	32	2

Flame Premium



Figure 1



Figure 2



Figure 3

Article No	Description	Figure	Socket	Diameter (mm)	Total length (mm)	Lumen	Candela	Rated Wattage	Colour temp	Beam angle	Current type	Voltage	Power factor	Energy class	Dimmable	Lifespan (hrs)	Repl. wattage	Warranty (years)
LF023830321	E14 G45x75 250Lm 4W 819 Flame	1	E14			250		4	819	360	AC	220 - 240	0.85	G	Yes	25000	25	2
LF023840321	E14 C35x100 250Lm 4W 819 Flame	2	E14			250		4	819	360	AC	220 - 240	0.85	G	Yes	25000	25	2
LV023826321	E14 P26x56 100Lm 1.5W 819 Flame	3	E14			100		1.5	819	360	AC	220 - 240	0.5	G	Yes	25000	11	2

Flame



Figure 1



Figure 2



Figure 3



Figure 4



Figure 5

Article No	Description	Figure	Socket	Diameter (mm)	Total length (mm)	Lumen	Candela	Rated Wattage	Colour temp	Beam angle	Current type	Voltage	Power factor	Energy class	Dimmable	Lifespan (hrs)	Repl. wattage	Warranty (years)
L147245019	E14 G45x78 250Lm 4.5W 819 Flame	1	E14			250		4.5	819	360	AC	230	0.85	G	Yes	15000	25	2
L149135019	E14 C35x98 250Lm 4.5W 819 Flame	2	E14			250		4.5	819	360	AC	230	0.85	G	Yes	15000	25	2
L142626019	E14 P26x58 100Lm 2W 819 Flame	3	E14			100		2	819	360	AC	230	0.85	G	Yes	15000	11	2
L277245019	E27 G45x75 250Lm 4.5W 819 Flame	4	E27			250		4.5	819	360	AC	230	0.85	G	Yes	15000	25	2
L276060019	E27 A60x108 250Lm 4.5W 819 Flame	5	E27			250		4.5	819	360	AC	230	0.85	G	Yes	15000	25	2

Pygmy Premium



Figure 1



Figure 2



Figure 3



Figure 4



Figure 5

Article No	Description	Figure	Socket	Diameter (mm)	Total length (mm)	Lumen	Candela	Rated Wattage	Colour temp	Beam angle	Current type	Voltage	Power factor	Energy class	Dimmable	Lifespan (hrs)	Repl. wattage	Warranty (years)
LV023826302	E14 P26x56 60Lm 1W 925	1	E14			60		1	925	360	AC	220 - 240	0.4	G	No	25000	7	2
LV023826502	E14 P26x60 140Lm 1.5W 925	2	E14			140		1.5	925	360	AC	220 - 240	0.5	F	No	25000	15	2
LF023826707	E14 P26x56 190Lm 3W 927	3	E14			190		3	927	360	AC	220 - 240	0.85	G	Yes	25000	20	2
LV024026502	Ba15d P26x56 140Lm 1.5W 925	4	Ba15d			140		1.5	925	360	AC	220 - 240	0.5	F	No	25000	15	2
LF024026702	Ba15d P26x56 190Lm 3W 925	5	Ba15d			190		3	925	360	AC	220 - 240	0.5	G	Yes	25000	20	2



Tubular Fila Premium



Figure 1



Figure 2



Figure 3



Figure 4



Figure 5



Figure 6



Figure 7

Article No	Description	Figure	Socket	Diameter (mm)	Total length (mm)	Lumen	Candela	Rated Wattage	Colour temp	Beam angle	Current type	Voltage	Power factor	Energy class	Dimmable	Lifespan (hrs)	Repl. wattage	Warranty (years)
LV023820502	E14 T20x60 100Lm 1.5W 925	1	E14			100		1.5	925	360	AC	220 - 240	0.5	G	No	25000	11	2
LF023893402	E14 T20x60 190Lm 3W 925	2	E14			190		3	925	360	AC	220 - 240	0.8	G	Yes	25000	20	2
LF023891502	E14 T25x85 140Lm 1.5W 925	3	E14			140		1.5	925	360	AC	220 - 240	0.85	F	Yes	25000	15	2
LF023890302	E14 T25x85 320Lm 4W 925	4	E14			320		4	925	360	AC	220 - 240	0.9	G	Yes	25000	30	2
LF023890305	E14 T25x85 250Lm 4W 922 Gold	5	E14			250		4	922	360	AC	220 - 240	0.9	G	Yes	25000	25	2
LF023893602	E14 T20x115 320Lm 4W 925	6	E14			320		4	925	360	AC	220 - 240	0.9	G	Yes	25000	30	2
LF023893709	E14 T25x115 250Lm 4W 922	7	E14			250		4	922	360	AC	220 - 240	0.9	G	Yes	25000	25	2

Reflector Fila Premium



Figure 1



Figure 2

Article No	Description	Figure	Socket	Diameter (mm)	Total length (mm)	Lumen	Candela	Rated Wattage	Colour temp	Beam angle	Current type	Voltage	Power factor	Energy class	Dimmable	Lifespan (hrs)	Repl. wattage	Warranty (years)
LF023850092	E14 R50x84 250Lm 4W 925	1	E14			250		4	925	180	AC	220 - 240	0.9	G	Yes	25000	25	2
LF023863092	E27 R63x103 320Lm 5.5W 925 120°	2	E27			320	190	5.5	925	120	AC	220 - 240	0.9	G	Yes	25000	30	2

Household

Lamps for general use, basic lighting of general spaces.



PROFESSIONAL
LIGHTING

Adjustable Beam Angle Premium Dim



Figure 1



Figure 2

Article No	Description	Figure	Socket	Diameter (mm)	Total length (mm)	Lumen	Candela	Rated Wattage	Colour temp	Beam angle	Current type	Voltage	Power factor	Energy class	Dimmable	Lifespan (hrs)	Repl. wattage	Warranty (years)
L642788808	GU10 PMMA 50x58 250Lm 5W 927 30-80° White	1	GU10			210	420	5	927	30-80	AC	180 - 240	0.6	G	Yes	30000	22	3
L642788817	GU10 PMMA 50x58 250Lm 5W 927 30-80°	2	GU10			210	420	5	927	30-80	AC	180 - 240	0.6	G	Yes	30000	22	3

Dim To Warm Premium



Figure 1



Figure 2



Figure 3



Figure 4



Figure 5

Article No	Description	Figure	Socket	Diameter (mm)	Total length (mm)	Lumen	Candela	Rated Wattage	Colour temp	Beam angle	Current type	Voltage	Power factor	Energy class	Dimmable	Lifespan (hrs)	Repl. wattage	Warranty (years)
L642799908	GU10 DTW 50x58 250Lm 5.5W 820-828 40° White	1	GU10			210	420	5.5	820 - 828	40	AC	180 - 240	0.65	G	Yes	30000		3
L642777708	GU10 DTW 50x63 250Lm 5.5W 820-828 30-80° White	2	GU10			210	420	5.5	820 - 828	30-80	AC	180 - 240	0.65	G	Yes	30000	22	3
L642777717	GU10 DTW 50x63 250Lm 5.5W 820-828 30-80°	3	GU10			210	420	5.5	820 - 828	30-80	AC	180 - 240	0.65	G	Yes	30000	22	3
L642763900	GU10 DTW Glass 50x53 300Lm 5.5W 922-927 38°	4	GU10			300	530	5.5	922 - 927	38	AC	220 - 240	0.8	G	Yes	15000		2
L022320001	G9 DTW T16x58 320Lm 3W 820-828	5	G9			320		3	820 - 828	360	AC	220 - 240	0.9	F	Yes	15000	30	2

Dim To Warm



Figure 1



Figure 2



Figure 3



Figure 4



Figure 5



Figure 6

Article No	Description	Figure	Socket	Diameter (mm)	Total length (mm)	Lumen	Candela	Rated Wattage	Colour temp	Beam angle	Current type	Voltage	Power factor	Energy class	Dimmable	Lifespan (hrs)	Repl. wattage	Warranty (years)
L149125001	E14 DTW C37x105 250Lm 4W 920-927 Opal	1	E14			250		4	920 - 927	270	AC	220 - 240	0.75	G	Yes	25000	25	2
L149147001	E14 DTW C37x105 450Lm 6W 920-927 Opal	1	E14			450		6	920 - 927	270	AC	220 - 240	0.85	G	Yes	25000	39	2
L147225001	E14 DTW G45x78 250Lm 4W 920-927 Opal	2	E14			250		4	920 - 927	200	AC	220 - 240	0.75	G	Yes	25000	25	2
L147247001	E14 DTW G45x78 450Lm 6W 920-927 Opal	2	E14			450		6	920 - 927	200	AC	220 - 240	0.85	G	Yes	25000	39	2
L277225001	E27 DTW G45x73 250Lm 4W 920-927 Opal	3	E27			250		4	920 - 927	200	AC	220 - 240	0.75	G	Yes	25000	25	2
L278047011	E27 DTW G45x80 470Lm 5W 818-827 Milky	4	E27			470		5	818 - 827	360	AC	230	0.90	F	Yes	15000	40	2
L276081001	E27 DTW A60x118 810Lm 11W 920-927 Opal	5	E27			810		11	920 - 927	270	AC	220 - 240	0.95	G	Yes	25000	60	2
L276505501	E27 DTW A65x128 1050Lm 14W 920-927 Opal	6	E27			1050		14	920 - 927	270	AC	220 - 240	0.95	G	Yes	25000	75	2



G4 Premium



Figure 1



Figure 2



Figure 3

Article No	Description	Figure	Socket	Diameter (mm)	Total length (mm)	Lumen	Candela	Rated Wattage	Colour temp	Beam angle	Current type	Voltage	Power factor	Energy class	Dimmable	Lifespan (hrs)	Repl. wattage	Warranty (years)
022450227	G4 T14.6x37 200Lm 2W 827	1	G4			200		2	827	360	AC/DC	12	0.5	F	Yes	30000	21	3
L022450327	G4 T17x40 300Lm 3W 827	2	G4			300		3	826 - 828	360	AC/DC	12	0.7	F	Yes	25000	28	3
L022450427	G4 Disc 24x10 220Lm 1.8W 827	3	G4			220		1.8	826 - 828	180	AC/DC	12 - 15	0.7	E	No	25000	22	3

G4



Figure 1



Figure 2



Figure 3



Figure 4

Article No	Description	Figure	Socket	Diameter (mm)	Total length (mm)	Lumen	Candela	Rated Wattage	Colour temp	Beam angle	Current type	Voltage	Power factor	Energy class	Dimmable	Lifespan (hrs)	Repl. wattage	Warranty (years)
L022451028	G4 COB T10x31 100Lm 1W 827	1	G4			100		1	826 - 828	330	AC/DC	12	0.9	F	Yes	15000	11	2
022453527	G4 COB T10x37 140Lm 1.5W 827 Frost	2	G4			140		1.5	826 - 828	360	AC/DC	12	0.65	F	Yes	15000	15	2
022451427	G4 COB T10x35 160Lm 1.5W 827	3	G4			160		1.5	826 - 828	360	AC/DC	12	1	F	Yes	25000	17	2
L022451227	G4 T10x32 100Lm 1W 827	4	G4			100		1	826 - 828	170	AC/DC	9 - 14	0.7	F	Yes	15000	11	2



G9 Premium



Figure 1



Figure 2

Article No	Description	Figure	Socket	Diameter (mm)	Total length (mm)	Lumen	Candela	Rated Wattage	Colour temp	Beam angle	Current type	Voltage	Power factor	Energy class	Dimmable	Lifespan (hrs)	Repl. wattage	Warranty (years)
L022325927	G9 T16x50 320Lm 3.5W 927	1	G9			320		3.5	926 - 928	360	AC	200 - 240	0.90	F	Yes	25000	30	3
L022352671-1	G9 T17x50 330Lm 3.5W 827 Frost	2	G9			330		3.5	826 - 828	360	AC	200 - 240	0.9	F	Yes	25000	30	3

G9 Premium 120V



Figure 1

Article No	Description	Figure	Socket	Diameter (mm)	Total length (mm)	Lumen	Candela	Rated Wattage	Colour temp	Beam angle	Current type	Voltage	Power factor	Energy class	Dimmable	Lifespan (hrs)	Repl. wattage	Warranty (years)
L022120827	G9 T17x50 120V 330Lm 3.5W 827 Frost	1	G9			330		3.5	826 - 828	360	AC	100 - 120	0.9	F	Yes	25000	30	3

G9



Figure 1



Figure 2



Figure 3



Figure 4



Figure 5



Figure 6



Figure 7



Figure 8



Figure 9

Article No	Description	Figure	Socket	Diameter (mm)	Total length (mm)	Lumen	Candela	Rated Wattage	Colour temp	Beam angle	Current type	Voltage	Power factor	Energy class	Dimmable	Lifespan (hrs)	Repl. wattage	Warranty (years)
L022340227	G9 T13.3x50 190Lm 2W 827 Glass	1	G9			190		2	826 - 828	360	AC	220 - 240	0.75	F	No	20000	20	2
L022319027	G9 T13.3x50 180Lm 2W 827 Glass Frosted	2	G9			180		2.2	826 - 828	360	AC	220 - 240	0.75	G	No	15000	19	2
L022327027	G9 T13.3x60 260Lm 3W 827 Glass Frosted	3	G9			260		3.3	826 - 828	360	AC	220 - 240	0.75	G	No	15000	26	2
L022364627	G9 T16x47 180Lm 2W 828	4	G9			180		2	827 - 829	360	AC	200 - 240	0.85	F	Yes	20000	19	2
L022366037	G9 T16x60 260Lm 3W 828	5	G9			260		3	827 - 829	360	AC	200 - 240	0.85	F	Yes	20000	26	2
L022171827	G9 T17x49 280Lm 3W 827	6	G9			280		3.3	826 - 828	360	AC	220 - 240	0.9	F	Yes	25000	27	2
L022173827	G9 T17x49 260Lm 3W 827 Frosted	7	G9			260		3.3	826 - 828	360	AC	200 - 240	0.9	G	Yes	25000	26	2
L022335897	G9 T16x50 320Lm 3.5W 827	8	G9			320		3.5	826 - 828	360	AC	200 - 240	0.5	F	No	15000	30	2
L022172827	G9 T17x49 310Lm 3W 827 Frost	7	G9			310		3	826 - 828	360	AC	200 - 240	0.5	F	No	25000	29	2
L022336247	G9 T16x48 190Lm 2.5W 827 Frost	9	G9			190		2.5	826 - 828	320	AC	220 - 240	0.8	G	No	20000	20	2
022336247-1	G9 T16x49 180Lm 2.5W 827 Frost	9	G9			180		2.5	826 - 828	260	AC	200 - 240	0.80	G	Yes	15000	19	2
L022336244	G9 T16x48 250Lm 2.5W 840 Frost	9	G9			250		2.5	838 - 842	320	AC	220 - 240	0.8	F	No	20000	25	2

GY6.35 Premium



Figure 1

Article No	Description	Figure	Socket	Diameter (mm)	Total length (mm)	Lumen	Candela	Rated Wattage	Colour temp	Beam angle	Current type	Voltage	Power factor	Energy class	Dimmable	Lifespan (hrs)	Repl. wattage	Warranty (years)
L022550327	GY6.35 T17x48 380Lm 3.5W 827	1	GY6.35			380		3.5	826 - 828	360	AC/DC	12	0.7	F	Yes	25000	34	3

General Dimmable Premium



Figure 1



Figure 2



Figure 3



Figure 4



Figure 5



Figure 6

Article No	Description	Figure	Socket	Diameter (mm)	Total length (mm)	Lumen	Candela	Rated Wattage	Colour temp	Beam angle	Current type	Voltage	Power factor	Energy class	Dimmable	Lifespan (hrs)	Repl. wattage	Warranty (years)
L149147037	E14 C35x105 470Lm 5W 827 Opal	1	E14			470		5	826 - 828	150	AC	220 - 240	0.80	F	Yes	15000	40	3
L147247037	E14 G45x80 470Lm 5W 827 Opal	2	E14			470		5	826 - 828	150	AC	220 - 240	0.8	F	Yes	15000	40	3
L277247037	E27 G45x75 470Lm 5W 827 Opal	3	E27			470		5	826 - 828	150	AC	220 - 240	0.8	F	Yes	15000	40	3
L276047037	E27 A60x115 470Lm 6W 827 Opal	4	E27			470		6	826 - 828	200	AC	230	0.85	G	Yes	25000	40	3
L276081037	E27 A60x115 810Lm 10W 827 Opal	4	E27			810		10	826 - 828	200	AC	220 - 240	0.8	G	Yes	25000	60	3
L276510537	E27 A65x115 1055Lm 12W 827 Opal	5	E27			1055		12	826 - 828	200	AC	220 - 240	0.9	F	Yes	25000	75	3
L276715037	E27 A67x135 1500Lm 15W 827 Opal	6	E27			1500		15	826 - 828	200	AC	230	0.95	F	Yes	25000	99	3

General VR 100-240V



Figure 1



Figure 2



Figure 3



Figure 4



Figure 5



Figure 6



Figure 7

Article No	Description	Figure	Socket	Diameter (mm)	Total length (mm)	Lumen	Candela	Rated Wattage	Colour temp	Beam angle	Current type	Voltage	Power factor	Energy class	Dimmable	Lifespan (hrs)	Repl. wattage	Warranty (years)
LB147225030	E14 G45x78 250Lm 3W 830 Opal	1	E14			250		3	829 - 831	160	AC/DC	100 - 240	0.5	G	No	25000	25	2
LB147240030	E14 G45x78 400Lm 5W 830 Opal	1	E14			400		5	829 - 831	160	AC/DC	100 - 240	0.5	G	No	25000	35	2
LB149125030	E14 C35x100 250Lm 3W 830 Opal	2	E14			250		3	829 - 831	160	AC/DC	100 - 240	0.5	G	No	25000	25	2
LB149140030	E14 C35x100 400Lm 5W 830 Opal	2	E14			400		5	829 - 831	160	AC/DC	100 - 240	0.5	G	No	25000	35	2
LB277225030	E27 G45x78 250Lm 3W 830 Opal	3	E27			250		3	829 - 831	160	AC/DC	100 - 240	0.5	G	No	25000	25	2
LB277240030	E27 G45x81 400Lm 5W 830 Opal	3	E27			400		5	829 - 831	160	AC/DC	100 - 240	0.5	G	No	25000	35	2
LB279125030	E27 C35x100 250Lm 3W 830 Opal	4	E27			250		3	829 - 831	160	AC/DC	100 - 240	0.5	G	No	25000	25	2
LB276064030	E27 A60x110 600Lm 7W 830 Opal	5	E27			600		7	829 - 831	220	AC/DC	100 - 240	0.5	F	No	25000	48	2
LB276081027	E27 A60x110 800Lm 10W 827 Opal	5	E27			800		10	826 - 828	220	AC/DC	100 - 240	0.5	G	No	25000	60	2
LB276081030	E27 A60x110 810Lm 10W 830 Opal	5	E27			810		10	829 - 831	220	AC/DC	100 - 240	0.5	G	No	25000	60	2
LB276097027	E27 A60x110 970Lm 12W 827 Opal	5	E27			970		12	826 - 828	220	AC/DC	100 - 240	0.5	G	No	25000	70	2
LB277013330	E27 A71x135 1200Lm 15W 830 Opal	6	E27			1200		16.5	829 - 831	160	AC/DC	100 - 240	0.5	G	No	25000	83	2
LB226081027	Ba22d A60x110 810Lm 10W 827 Opal	7	Ba22d			810		10	826 - 828	220	AC/DC	90 - 260	0.5	G	No	20000	60	2

PAR Premium



Figure 1



Figure 2



Figure 3



Figure 4



Figure 5

Article No	Description	Figure	Socket	Diameter (mm)	Total length (mm)	Lumen	Candela	Rated Wattage	Colour temp	Beam angle	Current type	Voltage	Power factor	Energy class	Dimmable	Lifespan (hrs)	Repl. wattage	Warranty (years)
L641435827	E14 PAR16 50x81 350Lm 5W 827 36°	1	E14			350	740	5	826 - 828	36	AC	220 - 240	0.7	F	Yes	15000		3
L642735827	E27 PAR16 50x78 350Lm 5W 827 36°	2	E27			350	740	5	826 - 828	36	AC	220 - 240	0.7	F	Yes	15000		3
L642763827	E27 PAR20 63x93 500Lm 7W 827 36° IP65	3	E27			500	1000	7	826 - 828	36	AC	220 - 240	0.7	F	Yes	15000		3
L642775827-1	E27 PAR30 95x95 610Lm 10W 827 36deg IP65	4	E27			610	1500	10	826 - 828	36	AC	220 - 240	0.7	F	Yes	15000		3
L642790827	E27 PAR38 121x135 900Lm 15W 827 36° IP65	5	E27			900	1900	15	826 - 828	36	AC	220 - 240	0.9	F	Yes	25000		3



PAR 38 GROUND SPOTS
Bring your garden to life at night with our high quality ground spots.

PAR Glass



Figure 1



Figure 2



Figure 3

Article No	Description	Figure	Socket	Diameter (mm)	Total length (mm)	Lumen	Candela	Rated Wattage	Colour temp	Beam angle	Current type	Voltage	Power factor	Energy class	Dimmable	Lifespan (hrs)	Repl. wattage	Warranty (years)
L642000827	PAR20 Glass 64x88 345Lm 5W 827 36° IP65	1	E27			345	784	5	826 - 828	36	AC	220 - 240	0.7	F	Yes	25000		2
L643000827	PAR30 Glass 95x92 633Lm 10.5W 827 36° IP65	2	E27			633	1300	10.5	826 - 828	36	AC	220 - 240	0.9	G	Yes	25000		2
L643800827	PAR38 Glass 122x134 633Lm 14W 827 36° IP65	3	E27			1000	2500	14	826 - 828	30	AC	220 - 240	0.9	F	Yes	25000		2

Reflector Premium



Figure 1



Figure 2



Figure 3



Figure 4



Figure 5



Figure 6



Figure 7

Article No	Description	Figure	Socket	Diameter (mm)	Total length (mm)	Lumen	Candela	Rated Wattage	Colour temp	Beam angle	Current type	Voltage	Power factor	Energy class	Dimmable	Lifespan (hrs)	Repl. wattage	Warranty (years)
L143907027-1	E14 R39x70 320Lm 4W 827	1	E14			320	100	4	826 - 828	110	AC	230	0.5	F	No	15000	30	3
L145008827-1	E14 R50x88 470Lm 6W 827	2	E14			470	180	6	826 - 828	110	AC	230	0.5	F	Yes	15000	40	3
L275008827	E27 R50x88 480Lm 6W 827	3	E27			480	135	6	826 - 828	110	AC	230	0.5	F	Yes	15000	41	3
L276310027	E27 R63x100 650Lm 8W 827	4	E27			650	200	8	826 - 828	110	AC	230	0.5	F	Yes	15000	51	3
L278011727	E27 R80x117 810Lm 10W 827	5	E27			810	250	10	826 - 828	110	AC	230	0.5	F	Yes	15000	60	3
L279513727-1	E27 R95x137 970Lm 11W 827	6	E27			970	275	11	826 - 828	110	AC	230	0.5	F	Yes	15000	70	3
L271251727	E27 R125x170 1150Lm 15W 827	7	E27			1150	390	15	826 - 828	110	AC	230	0.8	F	Yes	15000	80	3

R7s Round



Figure 1



Figure 2



Figure 3



Figure 4



Figure 5



Figure 6



Figure 7



Figure 8



Figure 9



Figure 10

Article No	Description	Figure	Socket	Diameter (mm)	Total length (mm)	Lumen	Candela	Rated Wattage	Colour temp	Beam angle	Current type	Voltage	Power factor	Energy class	Dimmable	Lifespan (hrs)	Repl. wattage	Warranty (years)
L647800530	R7s T15x78 490Lm 5W 830	1	R7s			490		5.1	829 - 831	360	AC	220 - 240	0.5	F	No	15000	41	2
L647850097	R7s T25x78 400Lm 5W 830	2	R7s			400		5	829 - 831	360	AC	85 - 265	0.5	G	Yes	15000	35	2
L647800630	R7s T23x78 500Lm 6W 830	3	R7s			500		6	829 - 831	360	AC	220 - 240	0.8	G	Yes	15000	42	2
L647800830	R7s T29x78 950Lm 8W 830	4	R7s			950		8	829 - 831	360	AC	220 - 240	0.9	E	Yes	15000	69	2
L641800930	R7s T15x118 830Lm 9W 830	5	R7s			830		9	829 - 831	360	AC	220 - 240	0.5	F	No	15000	61	2
L641897027	R7s T22x118 970Lm 11W 827 Frost	6	R7s			970		11	826 - 828	360	AC	230	0.5	F	No	15000	70	2
L641829937	R7s T22x118 900Lm 10W 827 Frost	7	R7s			900		10	826 - 828	360	AC	230	0.85	F	Yes	15000	66	2
L641801030	R7s T23x118 900Lm 9.5W 830	8	R7s			900		10	829 - 831	360	AC	220 - 240	0.8	F	Yes	15000	66	2
L641828837	R7s T28x118 1150Lm 13W 827	9	R7s			1150		13	826 - 828	360	AC	220 - 240	0.85	F	Yes	15000	80	2
L641801230	R7s T29x118 1520Lm 12.5W 830	10	R7s			1520		12.5	829 - 831	360	AC	220 - 240	0.9	E	Yes	15000	100	2

Spot GU10 Premium



Figure 1



Figure 2



Figure 3



Figure 4



Figure 5



Figure 6

Article No	Description	Figure	Socket	Diameter (mm)	Total length (mm)	Lumen	Candela	Rated Wattage	Colour temp	Beam angle	Current type	Voltage	Power factor	Energy class	Dimmable	Lifespan (hrs)	Repl. wattage	Warranty (years)
L641770627	GU10 MR16 PMMA 50x57 420Lm 6W 927 36° Grey	1	GU10			420	900	6	927	36	AC	220 - 240	0.8	F	Yes	25000		3
L641772727	GU10 MR16 PMMA 50x55 540Lm 7W 827 60° White	2	GU10			540	680	7	827	60	AC	220 - 240	0.9	F	Yes	30000		3
L022738110	GU10 MR16 50x54 320Lm 4.5W 827 38°	3	GU10			320	600	4.5	827	38	AC	230	0.92	F	Yes	30000		3
L022738222	GU10 MR16 PMMA 50x71 400Lm 5.5W 827 38°	4	GU10			400	850	5.5	827	38	AC	230	0.9	F	Yes	30000		3
022738442-1	GU10 MR16 PMMA 50x91 520Lm 8W 827 38°	5	GU10			520	1075	8	827	38	AC	230	0.82	F	Yes	30000		3
L641738722	GU10 MR16 50x55 380Lm 7W 822 46°	6	GU10			380	550	7	822	46	AC	220 - 240	0.7	G	Yes	15000		3
L641747727	GU10 MR16 50x55 430Lm 7W 827 17°	6	GU10			430	3000	7	827	17	AC	220 - 240	0.7	G	Yes	15000		3
L641751427	GU10 MR16 50x55 510Lm 7W 827 40°	6	GU10			510	900	7	827	40	AC	220 - 240	0.7	F	Yes	15000		3
L641754740	GU10 MR16 50x55 510Lm 7W 840 40°	6	GU10			510	1000	7	840	40	AC	220 - 240	0.7	E	Yes	15000		3



Spot GU10 Glass Premium



Figure 1

Article No	Description	Figure	Socket	Diameter (mm)	Total length (mm)	Lumen	Candela	Rated Wattage	Colour temp	Beam angle	Current type	Voltage	Power factor	Energy class	Dimmable	Lifespan (hrs)	Repl. wattage	Warranty (years)
L642761927	GU10 MR16 Glass 50x53 350Lm 5.5W 927 38° Dim	1	GU10			350	650	5.5	927	38	AC	220 - 240	0.8	F	Yes	15000		2
L642762927	GU10 MR16 Glass 50x53 350Lm 5.5W 927 38° 3Dim	1	GU10			320	630	5.5	927	38	AC	220 - 240	0.8	F	Yes	15000		2

Spot GU10 Glass



Figure 1



Figure 2

Article No	Description	Figure	Socket	Diameter (mm)	Total length (mm)	Lumen	Candela	Rated Wattage	Colour temp	Beam angle	Current type	Voltage	Power factor	Energy class	Dimmable	Lifespan (hrs)	Repl. wattage	Warranty (years)
L642736127	GU10 MR16 Glass 50x54 345Lm 3.6W 827 36deg	1	GU10			345	640	3.6	826 - 828	36	AC	220 - 240	0.5	E	Yes	15000		2
L642750127-1	GU10 MR16 Glass 50x54 345Lm 4W 827 36°	1	GU10			345	690	4	827	36	AC	220 - 240	0.5	F	No	15000		2
L642760027	GU10 MR16 Glass 50x55 420Lm 5.5W 827 38° Dim	2	GU10			420	650	5.5	827	38	AC	220 - 240	0.90	F	Yes	15000		2
L642736327	GU10 MR16 Glass 50x54 540Lm 7W 827 36° Dim	1	GU10			540	1000	7	827	36	AC	220 - 240	0.8	F	Yes	25000		2

Spot GU10 MR11 Premium



Figure 1

Article No	Description	Figure	Socket	Diameter (mm)	Total length (mm)	Lumen	Candela	Rated Wattage	Colour temp	Beam angle	Current type	Voltage	Power factor	Energy class	Dimmable	Lifespan (hrs)	Repl. wattage	Warranty (years)
L022935427-1	GU10 MR11 35x48 240Lm 4W 827 35°	1	GU10			240	500	4	827	35	AC	220 - 240	0.7	G	Yes	15000		3
L022935430	GU10 MR11 35x48 240Lm 4W 830 35°	1	GU10			240	500	4	830	35	AC	220 - 240	0.7	G	Yes	15000		3

Spot GU10 MR11



Figure 1



Figure 2

Article No	Description	Figure	Socket	Diameter (mm)	Total length (mm)	Lumen	Candela	Rated Wattage	Colour temp	Beam angle	Current type	Voltage	Power factor	Energy class	Dimmable	Lifespan (hrs)	Repl. wattage	Warranty (years)
L022935827	GU10 MR11 35x48 270Lm 3.5W 827 38°	1	GU10			270	580	3.5	826 - 828	38	AC	220 - 240	0.75	F	Yes	15000		2
L022940030	GU10 MR11 Glass 35x47 160Lm 3W 830 40°	2	GU10			160	270	3	829 - 830	40	AC	220 - 240	0.9	G	Yes	30000		2

GU10 Glass



Figure 1

Article No	Description	Figure	Socket	Diameter (mm)	Total length (mm)	Lumen	Candela	Rated Wattage	Colour temp	Beam angle	Current type	Voltage	Power factor	Energy class	Dimmable	Lifespan (hrs)	Repl. wattage	Warranty (years)
L643090027	GU10 Glass 30x80 440Lm 4W 827	1	GU10			440		4.2	825 - 830	300	AC	220 - 240	0.5	F	No	20000	38	2
L643090040	GU10 Glass 30x80 440Lm 4W 840	1	GU10			440		4.2	838 - 843	300	AC	220 - 240	0.5	F	No	20000	38	2
L643090065	GU10 Glass 30x80 440Lm 4W 865	1	GU10			440		4.2	863 - 866	300	AC	220 - 240	0.5	F	No	20000	38	2

Spot GU5.3 12V Premium



Figure 1



Figure 2

Article No	Description	Figure	Socket	Diameter (mm)	Total length (mm)	Lumen	Candela	Rated Wattage	Colour temp	Beam angle	Current type	Voltage	Power factor	Energy class	Dimmable	Lifespan (hrs)	Repl. wattage	Warranty (years)
022533123	GU5.3 MR16 PMMA 50x62 280Lm 4W 827 38°	1	GU5.3			325	700	4	827	38	AC/DC	12	0.5	G	No	30000		3
023040270	GU5.3 MR16 PMMC 50x50 268Lm 4W 827 45°	2	GU5.3			270	500	4	827	45	AC/DC	12	0.5	F	No	30000		2

Spot GU5.3 12V Glass Dimmable



Figure 1

Article No	Description	Figure	Socket	Diameter (mm)	Total length (mm)	Lumen	Candela	Rated Wattage	Colour temp	Beam angle	Current type	Voltage	Power factor	Energy class	Dimmable	Lifespan (hrs)	Repl. wattage	Warranty (years)
L642771027	GU5.3 MR16 Glass 50x44 460Lm 6.2W 827 36°	1	GU5.3			460	900	6.2	827	36	AC/DC	12	0.9	F	Yes	15000		2

Spot GU5.3 12V Glass



Figure 1

Article No	Description	Figure	Socket	Diameter (mm)	Total length (mm)	Lumen	Candela	Rated Wattage	Colour temp	Beam angle	Current type	Voltage	Power factor	Energy class	Dimmable	Lifespan (hrs)	Repl. wattage	Warranty (years)
L642770727	GU5.3 MR16 Glass 50x48 350Lm 7W 827 36°	1	GU5.3			350	1100	7	827	36	AC	12	0.9	G	No	20000		2

Spot GU4 12V Premium



Figure 1

Article No	Description	Figure	Socket	Diameter (mm)	Total length (mm)	Lumen	Candela	Rated Wattage	Colour temp	Beam angle	Current type	Voltage	Power factor	Energy class	Dimmable	Lifespan (hrs)	Repl. wattage	Warranty (years)
021126400	GU4 MR11 35x42 219Lm 3W 840 30°	1	GU4			180	500	3	840	30	AC/DC	12	0.75	G	No	30000		3

Spot GU4 12V Dimmable



Figure 1

Article No	Description	Figure	Socket	Diameter (mm)	Total length (mm)	Lumen	Candela	Rated Wattage	Colour temp	Beam angle	Current type	Voltage	Power factor	Energy class	Dimmable	Lifespan (hrs)	Repl. wattage	Warranty (years)
L021136027	GU4 MR11 Glass 35x38 345Lm 4.5W 827 36°	1	GU4			345	600	4.5	827	36	AC/DC	12	0.9	F	Yes	25000		2

Spot GU4 12V



Figure 1



Figure 2

Article No	Description	Figure	Socket	Diameter (mm)	Total length (mm)	Lumen	Candela	Rated Wattage	Colour temp	Beam angle	Current type	Voltage	Power factor	Energy class	Dimmable	Lifespan (hrs)	Repl. wattage	Warranty (years)
L021120427	GU4 MR11 35x40 180Lm 4W 827 24°	1	GU4			180	450	4	827	24	AC/DC	12	0.6	G	No	25000		3
L641134527	GU4 MR11 Glass 35x38 345Lm 4.2W 827 36°	2	GU4			345	660	4.2	826 - 828	36	AC/DC	10.8 - 13.2	0.5	F	No	15000		2

Striplight Premium



Figure 1



Figure 2



Figure 3

Article No	Description	Figure	Socket	Diameter (mm)	Total length (mm)	Lumen	Candela	Rated Wattage	Colour temp	Beam angle	Current type	Voltage	Power factor	Energy class	Dimmable	Lifespan (hrs)	Repl. wattage	Warranty (years)
L419959927-1	S14s T30x300 320Lm 5.5W 827 Opal	1	S14s			320		5.5	827	270	AC	220 - 240	0.9	G	Yes	20000	30	3
L419950027-1	S14s T30x300 470Lm 7W 827 Opal	1	S14s			470		7	827	270	AC	220 - 240	0.5	G	No	25000	40	3
L419950040-1	S14s T30x300 660Lm 6W 840 Opal	1	S14s			660		6.5	838 - 842	270	AC	220 - 240	0.5	F	No	20000	51	3
L419979927-1	S14s T30x500 550Lm 9W 827 Opal	2	S14s			550		9	827	270	AC	220 - 240	0.9	G	Yes	20000	45	3
L419970027-1	S14s T30x500 640Lm 9W 827 Opal	2	S14s			640		9	827	270	AC	220 - 240	0.5	G	No	25000	50	3
L419970040-1	S14s T30x500 880Lm 8W 840 Opal	2	S14s			880		8.5	838 - 842	270	AC	220 - 240	0.5	F	No	20000	64	3
L419899927	S14s T30x1000 1150Lm 17W 827 Opal	3	S14s			1150		17	827	270	AC	220 - 240	0.5	G	Yes	25000	80	3
L419945027-1	S14s T30x1000 1450Lm 18W 827 Opal	3	S14s			1450		18	827	270	AC	220 - 240	0.5	G	No	25000	96	3

Tubular Pygmy Premium



Figure 1



Figure 2

Article No	Description	Figure	Socket	Diameter (mm)	Total length (mm)	Lumen	Candela	Rated Wattage	Colour temp	Beam angle	Current type	Voltage	Power factor	Energy class	Dimmable	Lifespan (hrs)	Repl. wattage	Warranty (years)
024314027	E14 P23x51 160Lm 2W 827 Fridge	1	E14			160		2	827	360	AC	200 - 240	0.5	G	No	25000	17	3
L024314127	E14 P23x53 140Lm 2W 827 Opal PVC	2	E14			140		2	827	360	AC/DC	200 - 240	0.5	G	No	25000	15	3

Tubular Nightlight



Figure 1

Article No	Description	Figure	Socket	Diameter (mm)	Total length (mm)	Lumen	Candela	Rated Wattage	Colour temp	Beam angle	Current type	Voltage	Power factor	Energy class	Dimmable	Lifespan (hrs)	Repl. wattage	Warranty (years)
L145413027	E14 T18x52 140Lm 2W 830 Opal	1	E14			140		2	830	330	AC	220 - 240	0.5	G	No	25000	15	2

Tubular Premium



Figure 1



Figure 2



Figure 3



Figure 4



Figure 5

Article No	Description	Figure	Socket	Diameter (mm)	Total length (mm)	Lumen	Candela	Rated Wattage	Colour temp	Beam angle	Current type	Voltage	Power factor	Energy class	Dimmable	Lifespan (hrs)	Repl. wattage	Warranty (years)
L142810930	E14 T29x118 850Lm 10W 930 Opal	1	E14			850		10	929 - 931	360	AC/DC	200 - 240	0.9	F	Yes	25000	63	3
L142901930	E14 T29x118 1050Lm 10W 930 Opal	1	E14			1050		10	929 - 931	360	AC/DC	200 - 240	0.9	F	Yes	25000	75	3
L272901930	E27 T29x115 1050Lm 10W 930 Opal	2	E27			1050		10	929 - 931	360	AC/DC	200 - 240	0.9	F	Yes	25000	75	3
L152810930	Ba15D T29x113 850Lm 8W 930 Opal	3	Ba15d			850		8	929 - 931	360	AC/DC	200 - 240	0.9	F	Yes	25000	63	3
L152901930	Ba15d T29x113 1050Lm 10W 930 Opal	3	Ba15d			1050		10	929 - 931	360	AC/DC	200 - 240	0.9	F	Yes	25000	75	3
L273500830	E27 T35x149 2100Lm 15W 830	4	E27			2100		15	829 - 831	360	AC/DC	200 - 240	0.9	D	Yes	25000	131	3
L273501830	E27 T35x149 1600Lm 15W 830 Opal	5	E27			1600		15	829 - 831	360	AC/DC	200 - 240	0.9	F	Yes	25000	104	3

S19 glass



Figure 1

Article No	Description	Figure	Socket	Diameter (mm)	Total length (mm)	Lumen	Candela	Rated Wattage	Colour temp	Beam angle	Current type	Voltage	Power factor	Energy class	Dimmable	Lifespan (hrs)	Repl. wattage	Warranty (years)
L411981027	S19 T38x310 850Lm 7W 827 Frosted	1	S19			850		7.5	826 - 828	360	AC	220 - 240	0.5	E	No	20000	63	2

Disc GX53 Premium



Figure 1

Article No	Description	Figure	Socket	Diameter (mm)	Total length (mm)	Lumen	Candela	Rated Wattage	Colour temp	Beam angle	Current type	Voltage	Power factor	Energy class	Dimmable	Lifespan (hrs)	Repl. wattage	Warranty (years)
L025347027	GX53 74x23 470Lm 6W 827 Opal	1	GX53			470	190	6	827	120	AC	220 - 240	0.7	F	Yes	15000	40	3

Marine & Industry

Lighting specifically designed for aboard ships, special battery driven systems, special voltages and industrial applications.



PROFESSIONAL
LIGHTING

Spot GU10 Dimmable Premium



Figure 1

Article No	Description	Figure	Socket	Diameter (mm)	Total length (mm)	Lumen	Candela	Rated Wattage	Colour temp	Beam angle	Current type	Voltage	Power factor	Energy class	Dimmable	Lifespan (hrs)	Repl. wattage	Warranty (years)
L642734827	GU10 MR16 50x54 340Lm 5W 827 36° White	1	GU10			340	700	5	827	36	AC	220 - 240	0.7	F	Yes	15000		3
L642745827	GU10 MR16 50x54 450Lm 7.5W 827 36° White	1	GU10			450	700	7.5	827	36	AC	220 - 240	0.7	F	Yes	15000		3

Spot GU10 VR 100-250V Premium



Figure 1

Article No	Description	Figure	Socket	Diameter (mm)	Total length (mm)	Lumen	Candela	Rated Wattage	Colour temp	Beam angle	Current type	Voltage	Power factor	Energy class	Dimmable	Lifespan (hrs)	Repl. wattage	Warranty (years)
L642735830	GU10 MR16 50x54 350Lm 5W 830 36° White	1	GU10			350	700	5	830	36	AC	100 - 250	0.5	F	No	15000		3
L642750830	GU10 MR16 50x54 460Lm 7.5W 830 36° White	1	GU10			460	750	7.5	830	36	AC	100 - 250	0.5	F	No	15000		3

Spot GU10 VR 24-30V



Figure 1

Article No	Description	Figure	Socket	Diameter (mm)	Total length (mm)	Lumen	Candela	Rated Wattage	Colour temp	Beam angle	Current type	Voltage	Power factor	Energy class	Dimmable	Lifespan (hrs)	Repl. wattage	Warranty (years)
L641704027-1	GU10 MR16 50x56 315Lm 5W 827 38°	1	GU10			315	461	5.25	827	38	DC	24 - 30	0.5	G	No	25000		2

Spot GU5.3 12V



Figure 1

Article No	Description	Figure	Socket	Diameter (mm)	Total length (mm)	Lumen	Candela	Rated Wattage	Colour temp	Beam angle	Current type	Voltage	Power factor	Energy class	Dimmable	Lifespan (hrs)	Repl. wattage	Warranty (years)
L023034027	GU5.3 MR16 50x47 340Lm 5W 827 36°	1	GU5.3			340	600	5	827	36	AC/DC	10 - 14	0.6	F	No	15000		3

Spot GU5.3 24V Premium



Figure 1



Figure 2

Article No	Description	Figure	Socket	Diameter (mm)	Total length (mm)	Lumen	Candela	Rated Wattage	Colour temp	Beam angle	Current type	Voltage	Power factor	Energy class	Dimmable	Lifespan (hrs)	Repl. wattage	Warranty (years)
023240400-1	GU5.3 MR16 50x50 310Lm 4W 840 45°	1	GU5.3			310	470	4	840	45	DC	12 - 25	1	E	No	30000		3
L642742630	GU5.3 MR16 50x48 425Lm 6W 830 38°	2	GU5.3			425	650	6	830	38	DC	24 - 30	1	F	No	15000		3

Spot GU5.3 24V



Figure 1

Article No	Description	Figure	Socket	Diameter (mm)	Total length (mm)	Lumen	Candela	Rated Wattage	Colour temp	Beam angle	Current type	Voltage	Power factor	Energy class	Dimmable	Lifespan (hrs)	Repl. wattage	Warranty (years)
023300270-2	GU5.3 MR16 50x48 225Lm 4W 827 38°	1	GU5.3			225	322	4.2	827	38	DC	24 - 30	0.5	G	No	25000		2

G4 VR 10-30V Premium



Figure 1

Article No	Description	Figure	Socket	Diameter (mm)	Total length (mm)	Lumen	Candela	Rated Wattage	Colour temp	Beam angle	Current type	Voltage	Power factor	Energy class	Dimmable	Lifespan (hrs)	Repl. wattage	Warranty (years)
L022453027	G4 T10x34 100Lm 1W 827	1	G4			100		1	826 - 828	360	DC	10 - 28	1	F	Yes	25000	11	3

General VR 10-60V Premium



Figure 1



Figure 2



Figure 3



Figure 4



Figure 5



Figure 6



Figure 7



Figure 8

Article No	Description	Figure	Socket	Diameter (mm)	Total length (mm)	Lumen	Candela	Rated Wattage	Colour temp	Beam angle	Current type	Voltage	Power factor	Energy class	Dimmable	Lifespan (hrs)	Repl. wattage	Warranty (years)
L147239930	E14 G45x80 250Lm 3W 830 Opal	1	E14			250		3	830	160	DC	12 - 60	1	G	No	25000	25	3
L277239930	E27 G45x80 250Lm 3W 830 Opal	2	E27			250		3	830	160	DC	12 - 60	1	G	No	25000	25	3
L276039930	E27 A60x115 320Lm 4W 830 Opal	3	E27			320		4	830	160	AC/DC	12 - 60	0.5	G	No	25000	30	3
L276040630	E27 A60x110 550Lm 7W 830 Opal	3	E27			550		7	830	160	AC/DC	12 - 60	0.6	G	No	25000	45	3
L276016830	E27 A60x114 810Lm 10W 830 Opal	4	E27			810		10	830	240	AC/DC	12 - 60	0.5	G	No	25000	60	3
L277041830	E27 A70x140 1100Lm 12W 830 Opal	5	E27			1100		12	830	160	AC/DC	12 - 60	0.5	F	No	15000	77	3
L157239830	Ba15d G45x80 250Lm 3W 830 Opal	6	Ba15d			250		3	830	160	DC	12 - 60	1	G	No	25000	25	3
L227239930	Ba22d G45x80 250Lm 3W 830 Opal	7	Ba22d			250		3	830	160	DC	12 - 60	1	G	No	25000	25	3
L226040630	Ba22d A60x110 550Lm 7W 830 Opal	8	Ba22d			550		7	830	160	AC/DC	12 - 60	0.6	G	No	25000	45	3

General VR 100-240V High Kelvin



Figure 1

Article No	Description	Figure	Socket	Diameter (mm)	Total length (mm)	Lumen	Candela	Rated Wattage	Colour temp	Beam angle	Current type	Voltage	Power factor	Energy class	Dimmable	Lifespan (hrs)	Repl. wattage	Warranty (years)
LB276081965	E27 A60x110 870Lm 10W 865 Opal	1	E27			870		10	865	160	AC/DC	100 - 240	0.5	F	No	25000	64	2

Tubular Premium Compact



Figure 1



Figure 2



Figure 3



Figure 4



Figure 5



Figure 6



Figure 7



Figure 8



Figure 9



Figure 10



Figure 11



Figure 12

Article No	Description	Figure	Socket	Diameter (mm)	Total length (mm)	Lumen	Candela	Rated Wattage	Colour temp	Beam angle	Current type	Voltage	Power factor	Energy class	Dimmable	Lifespan (hrs)	Repl. wattage	Warranty (years)
L024323637	E14 T14x47 250Lm 2.5W 827	1	E14			250		2.5	827	360	AC	200 - 240	0.5	F	No	25000	25	3
L024335737	E14 T16x54 420Lm 3.5W 827	2	E14			420		3.5	827	360	AC	200 - 240	0.5	E	No	30000	37	3
L024358830	E14 T18x61 440Lm 4.5W 930	3	E14			440		4.5	929 - 931	360	AC	200 - 240	0.5	F	No	25000	38	3
L024362607-1	E14 T17x53 330Lm 3.5W 827	4	E14			330		3.5	826 - 828	360	AC	200 - 240	0.9	F	Yes	25000	30	3
L024359830	E14 T18x61 440Lm 5W 930	3	E14			440		5	929 - 931	360	AC	200 - 240	0.8	F	Yes	25000	38	3
L141800830	E14 T18x80 840Lm 6W 830	5	E14			840		6	829 - 831	360	AC/DC	200 - 240	0.9	D	Yes	25000	62	3
L141801830	E14 T18x80 660Lm 6W 830	6	E14			660		6	829 - 831	360	AC/DC	200 - 240	0.9	E	Yes	25000	51	3
L148518830	E14 T18x90 300Lm 4W 830 Opal	7	E14			300	45	4	829 - 831	360	AC	170 - 250	0.4	G	No	25000	28	2
L024352227	Ba15d T17x47 250Lm 2.5W 827	8	Ba15d			250		2.5	827	360	AC	200 - 240	0.5	F	No	25000	25	3
L024351830	Ba15d T17x52 350Lm 3.5W 830	9	Ba15d			350		3.5	829 - 831	360	AC	200 - 240	0.9	F	Yes	25000	32	3
L024350830	Ba15d T17x52 380Lm 3.5W 830	10	Ba15d			380		3.5	829 - 831	360	AC	200 - 240	0.5	F	No	25000	34	3
L151800830	Ba15d T18x80 840Lm 6W 830	11	Ba15d			840		6	829 - 831	360	AC/DC	200 - 240	0.9	D	Yes	25000	62	3
L151801830	Ba15d T18x80 660Lm 6W 830	12	Ba15d			660		6	829 - 831	360	AC/DC	200 - 240	0.9	E	Yes	25000	51	3



Tubular Compact



Figure 1

Article No	Description	Figure	Socket	Diameter (mm)	Total length (mm)	Lumen	Candela	Rated Wattage	Colour temp	Beam angle	Current type	Voltage	Power factor	Energy class	Dimmable	Lifespan (hrs)	Repl. wattage	Warranty (years)
L145132027	E14 T16x51 320Lm 3W 827	1	E14			320		3.3	827	360	AC	220 - 240	0.5	F	No	25000	30	2
L145128027	E14 T16x51 280Lm 3W 827	1	E14			280		3.3	827	360	AC	220 - 240	0.9	F	Yes	25000	27	2

Tubular VR 10-30V Premium



Figure 1



Figure 2

Article No	Description	Figure	Socket	Diameter (mm)	Total length (mm)	Lumen	Candela	Rated Wattage	Colour temp	Beam angle	Current type	Voltage	Power factor	Energy class	Dimmable	Lifespan (hrs)	Repl. wattage	Warranty (years)
L024362427-1	E14 T17x52 180Lm 1.7W 827	1	E14			180		1.7	827	360	AC/DC	10 - 30	0.7	F	No	25000	19	3
L024372427-1	Ba15d T17x47 10-30V 190Lm 2W 827	2	Ba15d			190		2	826 - 828	360	AC/DC	10 - 30	0.5	F	No	25000	20	3
L024372430-1	Ba15d T17x47 10-30V 200Lm 2W 830	2	Ba15d			200		2	829 - 831	360	AC/DC	10 - 30	0.5	F	No	25000	21	3

Tubular 24V Premium



Figure 1



Figure 2

Article No	Description	Figure	Socket	Diameter (mm)	Total length (mm)	Lumen	Candela	Rated Wattage	Colour temp	Beam angle	Current type	Voltage	Power factor	Energy class	Dimmable	Lifespan (hrs)	Repl. wattage	Warranty (years)
L279334030	E27 T27x60 24-30V 400Lm 3W 830	1	E27			400		3	830	360	AC/DC	24 - 30	0.6	E	No	30000	35	3
L279352430	E27 T27x60 24-30V 550Lm 4.5W 830	1	E27			550		4.5	830	360	AC/DC	24 - 30	0.6	E	No	30000	45	3
L229334030	Ba22d T27x58 24-30V 400Lm 3W 830	2	Ba22d			400		3	830	360	AC/DC	24 - 30	0.6	E	No	30000	35	3
L229352430	Ba22d T27x58 24-30V 550Lm 4.5W 830	2	Ba22d			550		4.5	830	360	AC/DC	24 - 30	0.6	E	No	30000	45	3

Tubular VR 100-240V Premium



Figure 1



Figure 2

Article No	Description	Figure	Socket	Diameter (mm)	Total length (mm)	Lumen	Candela	Rated Wattage	Colour temp	Beam angle	Current type	Voltage	Power factor	Energy class	Dimmable	Lifespan (hrs)	Repl. wattage	Warranty (years)
L279333230	E27 T27x60 100-240V 320Lm 3W 830	1	E27			320		3	830	360	AC/DC	100 - 240	0.5	F	No	30000	30	3
L279355530	E27 T27x60 100-240V 550Lm 4.5W 830	1	E27			550		4.5	830	360	AC/DC	100 - 240	0.5	E	No	30000	45	3
L229333230-1	Ba22d T27x58 390Lm 3W 830	2	Ba22d			390		3	830	360	AC/DC	100 - 240	0.5	E	No	30000	35	3
L229355530	Ba22d T27x58 100-240V 550Lm 4.5W 830	2	Ba22d			550		4.5	830	360	AC/DC	100 - 240	0.5	E	No	30000	45	3

Filament 24V Premium



Figure 1



Figure 2

Article No	Description	Figure	Socket	Diameter (mm)	Total length (mm)	Lumen	Candela	Rated Wattage	Colour temp	Beam angle	Current type	Voltage	Power factor	Energy class	Dimmable	Lifespan (hrs)	Repl. wattage	Warranty (years)
L142404922	E14 G45x75 170Lm 3W DC 922	1	E14			170		4	922	360	AC/DC	24	0.90	G	No	15000	18	2
L272404922	E27 G45x75 170Lm 3W DC 922	2	E27			170		4	922	360	AC/DC	24	0.90	G	No	15000	18	2

Tubular Filament



Figure 1



Figure 2



Figure 3



Figure 4

Article No	Description	Figure	Socket	Diameter (mm)	Total length (mm)	Lumen	Candela	Rated Wattage	Colour temp	Beam angle	Current type	Voltage	Power factor	Energy class	Dimmable	Lifespan (hrs)	Repl. wattage	Warranty (years)
LF279505622	E27 T30x95 470Lm 5W 827	1	E27			470		5	827	360	AC	220 - 240	0.8	F	Yes	25000	40	2
LF279505621	E27 T30x95 470Lm 5W 827 Frost	2	E27			470		5	827	360	AC	220 - 240	0.9	F	Yes	25000	40	2
LF229505622	Ba22d T30x95 470Lm 5W 827	3	Ba22d			470		5	827	360	AC	220 - 240	0.9	F	Yes	25000	40	2
LF229505621	Ba22d T30x95 470Lm 5W 827 Frost	4	Ba22d			470		5	827	360	AC	220 - 240	0.9	F	Yes	25000	40	2

Tubular VR 95-265V



Figure 1



Figure 2



Figure 3



Figure 4

Article No	Description	Figure	Socket	Diameter (mm)	Total length (mm)	Lumen	Candela	Rated Wattage	Colour temp	Beam angle	Current type	Voltage	Power factor	Energy class	Dimmable	Lifespan (hrs)	Repl. wattage	Warranty (years)
L143864830	E14 T38x108 640Lm 7W 830 Opal	1	E14			640		7	830	270	AC	95 - 265	0.5	F	No	25000	50	2
L273864830	E27 T38x108 640Lm 7W 830 Opal	2	E27			640		7	830	270	AC	95 - 265	0.5	F	No	25000	50	2
L274181830	E27 T41x118 810Lm 8W 830 Opal	3	E27			810		8.5	830	250	AC	95 - 265	0.5	F	No	25000	60	2
L223864830	Ba22d T38x108 640Lm 7W 830 Opal	4	Ba22d			640		7	830	270	AC	95 - 265	0.5	F	No	25000	50	2
L223881830	Ba22d T38x108 810Lm 9W 830 Opal	4	Ba22d			810		9	830	270	AC	95 - 265	0.5	F	No	25000	60	2

Navigation Led



Figure 1



Figure 2



Figure 3



Figure 4

Article No	Description	Figure	Socket	Diameter (mm)	Total length (mm)	Lumen	Candela	Rated Wattage	Colour temp	Beam angle	Current type	Voltage	Power factor	Energy class	Dimmable	Lifespan (hrs)	Repl. wattage	Warranty (years)
L022790509	E27 T29x115 1300Lm 10W IP65 EMC	1	E27			1300		10	862 - 868	360	AC/DC	100 - 240	0.5	E	No	25000	88	2
L022290509	Ba22d T29x113 1300Lm 10W IP65 EMC	2	Ba22d			1300		10	862 - 868	360	AC/DC	100 - 240	0.5	E	No	25000	88	2
L029890509	P28s T29x119 1300Lm 10W IP65 EMC	3	P28s			1300		10	862 - 868	360	AC/DC	100 - 240	0.5	E	No	25000	88	2
L655779769	Bay15d T17x55 380Lm 3W IP65 EMC	4	Bay15d			380		3	862 - 868	360	AC/DC	10 - 30	0.6	E	No	25000	34	2

T8 Tube Premium



Figure 1

Article No	Description	Figure	Socket	Diameter (mm)	Total length (mm)	Lumen	Candela	Rated Wattage	Colour temp	Beam angle	Current type	Voltage	Power factor	Energy class	Dimmable	Lifespan (hrs)	Repl. wattage	Warranty (years)
L490260830	G13 T8 Tube 60 1450Lm 9W 830 Milky	1	G13			1450		9	830	210	AC	220 - 240	0.9	C	No	50000	96	2
L490260840	G13 T8 Tube 60 1500Lm 9W 840 Milky	1	G13			1500		9	840	210	AC	220 - 240	0.9	C	No	50000	99	2
L490212830	G13 T8 Tube 120 2800Lm 18W 830 Milky	1	G13			2800		18	830	210	AC	220 - 240	0.9	D	No	50000	167	2
L490212840	G13 T8 Tube 120 3000Lm 18W 840 Milky	1	G13			3000		18	840	210	AC	220 - 240	0.9	C	No	50000	177	2
L490215830	G13 T8 Tube 150 3700Lm 24W 830 Milky	1	G13			3700		24	830	210	AC	220 - 240	0.9	D	No	50000	197	2
L490215840	G13 T8 Tube 150 4000Lm 24W 840 Milky	1	G13			4000		24	840	210	AC	220 - 240	0.9	C	No	50000	58	2

T8 Tube



Figure 1

Article No	Description	Figure	Socket	Diameter (mm)	Total length (mm)	Lumen	Candela	Rated Wattage	Colour temp	Beam angle	Current type	Voltage	Power factor	Energy class	Dimmable	Lifespan (hrs)	Repl. wattage	Warranty (years)
L490160830	G13 T8 Tube 60 1000Lm 8W 830 Milky	1	G38			1000		8	830	210	AC	220 - 240	0.9	E	No	50000	72	2
L490160840	G13 T8 Tube 60 1050Lm 8W 840 Milky	1	G13			1050		8	840	210	AC	220 - 240	0.9	E	No	50000	75	2
L490112830	G13 T8 Tube 120 2100Lm 17W 830 Milky	1	G13			2100		17	830	210	AC	220 - 240	0.9	E	No	50000	131	2
L490112840	G13 T8 Tube 120 2200Lm 17W 840 Milky	1	G13			2200		17	840	210	AC	220 - 240	0.9	E	No	50000	136	2
L490115830	G13 T8 Tube 150 2600Lm 21W 830 Milky	1	G13			2600		21	830	210	AC	220 - 240	0.9	E	No	50000	157	2
L490115840	G13 T8 Tube 150 2750Lm 21W 840 Milky	1	G13			2750		21	840	210	AC	220 - 240	0.9	E	No	50000	165	2

T15 WB Wedge Base Premium

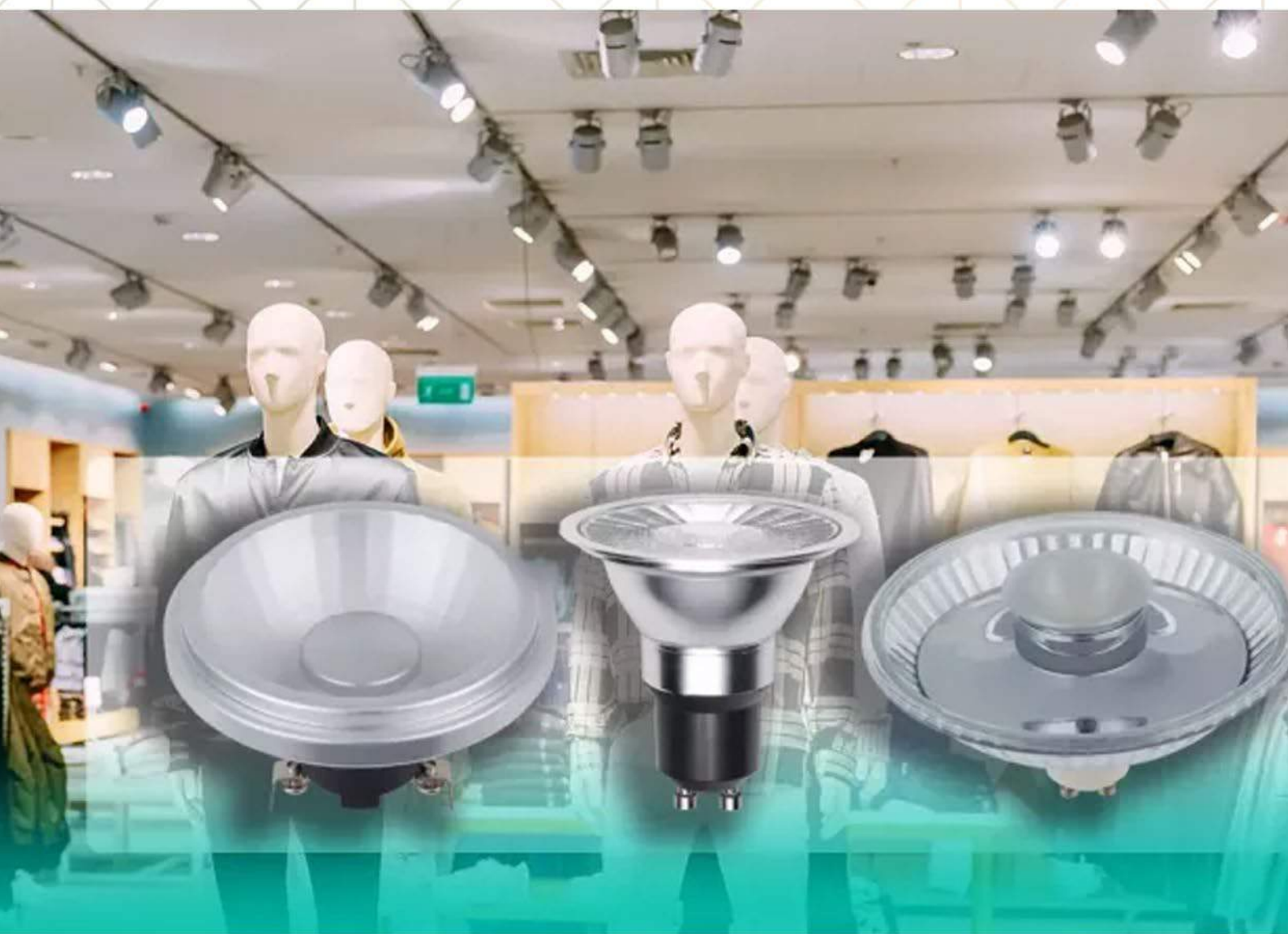


Figure 1

Article No	Description	Figure	Socket	Diameter (mm)	Total length (mm)	Lumen	Candela	Rated Wattage	Colour temp	Beam angle	Current type	Voltage	Power factor	Energy class	Dimmable	Lifespan (hrs)	Repl. wattage	Warranty (years)
L022625027	W2.1x9.5D T15x36 250Lm 2.5W 827	1	W2.1x9.5D			250		2.5	827	360	AC/DC	12	0.7	F	No	25000	25	3

Specials & projects

Signal LEDs and utility lighting for e.g. catering industry, retail, educational institutions, project lighting, shops or special application.



PROFESSIONAL
LIGHTING

Spot GU4 MR8 Premium



Figure 1

Article No	Description	Figure	Socket	Diameter (mm)	Total length (mm)	Lumen	Candela	Rated Wattage	Colour temp	Beam angle	Current type	Voltage	Power factor	Energy class	Dimmable	Lifespan (hrs)	Repl. wattage	Warranty (years)
L510335927	GU4 MR8 25x28 150Lm 3W 927 35° + Ext. Driver	1	GU4			150	390	3	926 - 928	35	AC	36	0.92	G	Yes	25000		3



Spot GU5.3 12V Dimmable Premium



Figure 1

Article No	Description	Figure	Socket	Diameter (mm)	Total length (mm)	Lumen	Candela	Rated Wattage	Colour temp	Beam angle	Current type	Voltage	Power factor	Energy class	Dimmable	Lifespan (hrs)	Repl. wattage	Warranty (years)
L022536927	GU5.3 MR16 50x47 460Lm 7.5W 927 36°	1	GU5.3			460	1000	7.5	926 - 928	36	AC/DC	9 - 14	0.9	G	Yes	25000		3

Spot GU10 ES63 Dimmable Premium



Figure 1

Article No	Description	Figure	Socket	Diameter (mm)	Total length (mm)	Lumen	Candela	Rated Wattage	Colour temp	Beam angle	Current type	Voltage	Power factor	Energy class	Dimmable	Lifespan (hrs)	Repl. wattage	Warranty (years)
L641771927	GU10 ES63 64x62 470Lm 8W 927 38°	1	GU10			470	865	8	926 - 928	38	AC	220 - 240	0.8	G	Yes	25000		3

Spot GU10 ES111 Dimmable Premium



Figure 1



Figure 2

Article No	Description	Figure	Socket	Diameter (mm)	Total length (mm)	Lumen	Candela	Rated Wattage	Colour temp	Beam angle	Current type	Voltage	Power factor	Energy class	Dimmable	Lifespan (hrs)	Repl. wattage	Warranty (years)
L641035927	GU10 ES111 Glass 110x73 500Lm 10W 927 35°	1	GU10			500	650	10	926 - 928	35	AC	220 - 240	0.65	G	Yes	25000		3
L641215927	GU10 ES111 110x64 650Lm 12W 927 15°	2	GU10			650	2400	12	926 - 928	15	AC	220 - 240	0.9	G	Yes	25000		3
L641235927	GU10 ES111 110x64 650Lm 12W 927 35°	2	GU10			650	950	12	926 - 928	35	AC	220 - 240	0.9	G	Yes	25000		3

Spot G53 AR111 Dimmable Premium



Figure 1



Figure 2



Figure 3



Figure 4



Figure 5

Article No	Description	Figure	Socket	Diameter (mm)	Total length (mm)	Lumen	Candela	Rated Wattage	Colour temp	Beam angle	Current type	Voltage	Power factor	Energy class	Dimmable	Lifespan (hrs)	Repl. wattage	Warranty (years)
L571210927	G53 AR111x67 650Lm 12W 927 10°	1	G53			650	7900	12	926 - 928	10	AC/DC	10 - 14	0.9	G	Yes	25000		3
L571210930	G53 AR111x67 690Lm 12W 930 10°	1	G53			690	8000	12	929 - 931	10	AC/DC	10 - 14	0.9	G	Yes	25000		3
L571224927	G53 AR111x67 650Lm 12W 927 24°	1	G53			650	4900	12	926 - 928	24	AC/DC	10 - 14	0.9	G	Yes	25000		3
L571224930	G53 AR111x67 690Lm 12W 930 24°	1	G53			690	5000	12	929 - 931	24	AC/DC	10 - 14	0.9	G	Yes	25000		3
L571235927	G53 AR111x67 650Lm 12W 927 35°	1	G53			650	1600	12	926 - 928	35	AC/DC	10 - 14	0.9	G	Yes	25000		3
L571235930	G53 AR111x67 690Lm 12W 930 35°	1	G53			690	1300	12	929 - 931	35	AC/DC	10 - 14	0.9	G	Yes	25000		3
L571510927	G53 AR111x47 920Lm 15W 927 10°	2	G53			920	7000	15	926 - 928	10	AC/DC	10 - 14	0.9	G	Yes	25000		3
L571524927	G53 AR111x47 920Lm 15W 927 24°	3	G53			920	3000	15	926 - 928	24	AC/DC	10 - 14	0.9	G	Yes	25000		3
L571535927	G53 AR111x47 920Lm 15W 927 35°	3	G53			920	1250	15	926 - 928	35	AC/DC	10 - 14	0.9	G	Yes	25000		3
L571235900	G53 DTW AR111x47 480Lm 12W 920-930 35°	1	G53			480	1200	12	920 - 930	35	AC/DC	10 - 14	0.9	G	Yes	25000		3
L571535900	G53 DTW AR111x47 610Lm 15W 920-930 35°	4	G53			610	1800	15	920 - 930	35	AC/DC	10 - 14	0.9	G	Yes	25000		3
L572204927	G53 AR111x47 1420Lm 22W 927 4° + Ext. Driver	5	G53			1420	40000	22	926 - 928	4	AC	48	0.9	G	Yes	25000		3



Spot Ba15d AR70 Premium



Figure 1



Figure 2

Article No	Description	Figure	Socket	Diameter (mm)	Total length (mm)	Lumen	Candela	Rated Wattage	Colour temp	Beam angle	Current type	Voltage	Power factor	Energy class	Dimmable	Lifespan (hrs)	Repl. wattage	Warranty (years)
L561925927	Ba15d AR70x55 400Lm 9W 927 24°	1	Ba15d			400	1300	9	926 - 928	24	AC/DC	10 - 14	0.9	G	Yes	25000		3
L560935927	Ba15d AR70x55 430Lm 9W 927 35°	2	Ba15d			430	500	9	926 - 928	35	AC/DC	10 - 14	0.9	G	Yes	25000		3
L560835900	Ba15d DTW AR70x55 330Lm 8W 920-928	1	Ba15d			330	600	8	920 - 928	35	AC/DC	10 - 14	0.9	G	Yes	25000		3

Project PAR Premium



Figure 1



Figure 2

Article No	Description	Figure	Socket	Diameter (mm)	Total length (mm)	Lumen	Candela	Rated Wattage	Colour temp	Beam angle	Current type	Voltage	Power factor	Energy class	Dimmable	Lifespan (hrs)	Repl. wattage	Warranty (years)
L642712357	E27 PAR30 95x91 690Lm 12W 927 35deg	1	E27			690	1300	12	926 - 928	35	AC	220 - 240	0.9	G	Yes	25000		3
L642812307	E27 PAR38 120x112 850Lm 16W 927 35deg	2	E27			850	1500	16	926 - 928	35	AC	220 - 240	0.9	G	Yes	25000		3

Spot Ba15d AR37 Premium



Figure 1

Article No	Description	Figure	Socket	Diameter (mm)	Total length (mm)	Lumen	Candela	Rated Wattage	Colour temp	Beam angle	Current type	Voltage	Power factor	Energy class	Dimmable	Lifespan (hrs)	Repl. wattage	Warranty (years)
LS40535927	Ba15d R37x42 240Lm 5W 927 35°	1	Ba15d			240	600	5	926 - 928	35	AC/DC	10 - 14	0.9	G	Yes	25000		3

Light Sensor



Figure 1



Figure 2



Figure 3

Article No	Description	Figure	Socket	Diameter (mm)	Total length (mm)	Lumen	Candela	Rated Wattage	Colour temp	Beam angle	Current type	Voltage	Power factor	Energy class	Dimmable	Lifespan (hrs)	Repl. wattage	Warranty (years)
L276099927-1	E27 A60x106 470Lm 4W 827 Light Sensor	1	E27			470		4.2	827	360	AC	220 - 240	0.5	E	No	20000	40	2
L276099925-1	E27 A60x106 430Lm 4W 825 Gold Light Sensor	2	E27			430		4.2	823 - 827	360	AC	220 - 240	0.5	F	No	20000	37	2
L276088827	E27 A60x106 810Lm 7W 827 Light Sensor	3	E27			810		7	827	360	AC	220 - 240	0.5	E	No	20000	60	2

GU10 Colour



Figure 1



Figure 2



Figure 3



Figure 4

Article No	Description	Figure	Socket	Diameter (mm)	Total length (mm)	Lumen	Candela	Rated Wattage	Colour temp	Beam angle	Current type	Voltage	Power factor	Energy class	Dimmable	Lifespan (hrs)	Repl. wattage	Warranty (years)
L641770502	GU10 MR16 Glass 50x54 5W 38° Red Dim	1	GU10			30	28	5		38	AC	220 - 240	0.9		Yes	15000		2
L641770592	GU10 MR16 Glass 50x54 5W 38° Red	1	GU10			50	28	5		38	AC	220 - 240	0.5		No	15000		2
L641770503	GU10 MR16 Glass 50x54 5W 38° Green Dim	2	GU10			55	30	5		38	AC	220 - 240	0.9		Yes	15000		2
L641770593	GU10 MR16 Glass 50x54 5W 38° Green	2	GU10			90	75	5		38	AC	220 - 240	0.5		No	15000		2
L641770504	GU10 MR16 Glass 50x54 5W 38° Yellow Dim	3	GU10			300	58	5		38	AC	220 - 240	0.9		Yes	15000		2
L641770594	GU10 MR16 Glass 50x54 5W 38° Yellow	3	GU10			250	90	5		38	AC	220 - 240	0.5		No	15000		2
L641770506	GU10 MR16 Glass 50x54 5W 38° Blue Dim	4	GU10			25	16	5		38	AC	220 - 240	0.9		Yes	15000		2
L641770596	GU10 MR16 Glass 50x54 5W 38° Blue	4	GU10			25	35	5		38	AC	220 - 240	0.5		No	15000		2

GU5.3 MR16 Colour



Figure 1



Figure 2



Figure 3



Figure 4

Article No	Description	Figure	Socket	Diameter (mm)	Total length (mm)	Lumen	Candela	Rated Wattage	Colour temp	Beam angle	Current type	Voltage	Power factor	Energy class	Dimmable	Lifespan (hrs)	Repl. wattage	Warranty (years)
L642790592	GU5.3 MR16 Glass 50x47.5 5W 38° Red	1	GU5.3			30	28	5		38	AC/DC	12	1		No	15000		2
L642790593	GU5.3 MR16 Glass 50x47.5 5W 38° Green	2	GU5.3			55	30	5		38	AC/DC	12	1		No	15000		2
L642790594	GU5.3 MR16 Glass 50x47.5 5W 38° Yellow	3	GU5.3			180	58	5		38	AC/DC	12	1		No	15000		2
L642790596	GU5.3 MR16 Glass 50x47.5 5W 38° Blue	4	GU5.3			25	16	5		38	AC/DC	12	1		No	15000		2

Party Colour Premium



Figure 1



Figure 2



Figure 3



Figure 4



Figure 5



Figure 6



Figure 7



Figure 8



Figure 9



Figure 10



Figure 11



Figure 12



Figure 13



Figure 14



Figure 15

Article No	Description	Figure	Socket	Diameter (mm)	Total length (mm)	Lumen	Candela	Rated Wattage	Colour temp	Beam angle	Current type	Voltage	Power factor	Energy class	Dimmable	Lifespan (hrs)	Repl. wattage	Warranty (years)
L147215002	E14 G45x75 1W Red	1	E14			12		1		360	AC	220 - 240	0.4		No	25000	1	2
L147215003	E14 G45x75 1W Green	2	E14			8		1		360	AC	220 - 240	0.4		No	25000	1	2
L147215004	E14 G45x75 1W Yellow	3	E14			60		1		360	AC	220 - 240	0.4		No	25000	7	2
L147215005	E14 G45x75 1W Orange	4	E14			40		1		360	AC	220 - 240	0.4		No	25000	4	2
L147215006	E14 G45x75 1W Blue	5	E14			5		1		360	AC	220 - 240	0.4		No	25000	1	2
L277215002	E27 G45x75 1W Red	6	E27			12		1		360	AC	220 - 240	0.4		No	25000	1	2
L277215003	E27 G45x75 1W Green	7	E27			8		1		360	AC	220 - 240	0.4		No	25000	1	2
L277215004	E27 G45x75 1W Yellow	8	E27			60		1		360	AC	220 - 240	0.4		No	25000	7	2
L277215005	E27 G45x75 1W Orange	9	E27			40		1		360	AC	220 - 240	0.4		No	25000	4	2
L277215006	E27 G45x75 1W Blue	10	E27			5		1		360	AC	220 - 240	0.4		No	25000	1	2
276015002	E27 A60x105 1W Red	11	E27			20		1		360	AC	220 - 240	0.4		No	25000	2	2
276015003	E27 A60x105 1W Green	12	E27			20		1		360	AC	220 - 240	0.4		No	25000	2	2
276015004	E27 A60x105 1W Yellow	13	E27			80		1		360	AC	220 - 240	0.4		No	25000	9	2
276015005	E27 A60x105 1W Orange	14	E27			40		1		360	AC	220 - 240	0.4		No	25000	4	2
276015006	E27 A60x105 1W Blue	15	E27			5		1		360	AC	220 - 240	0.4		No	25000	1	2

Shatterproof Polycarbonate



Figure 1



Figure 2

Article No	Description	Figure	Socket	Diameter (mm)	Total length (mm)	Lumen	Candela	Rated Wattage	Colour temp	Beam angle	Current type	Voltage	Power factor	Energy class	Dimmable	Lifespan (hrs)	Repl. wattage	Warranty (years)
L277345027	E27 G45x68 140Lm 1.5W 827 Polycarbonat	1	E27			140		1.5	827	360	AC	230	0.75	F	No	15000	15	2
L277355127	E27 A55x100 320Lm 3.5W 827 Polycarbonat	2	E27			320		3.5	827	360	AC	230	0.75	F	No	15000	30	2



Party Colour



Figure 1



Figure 2



Figure 3



Figure 4



Figure 5

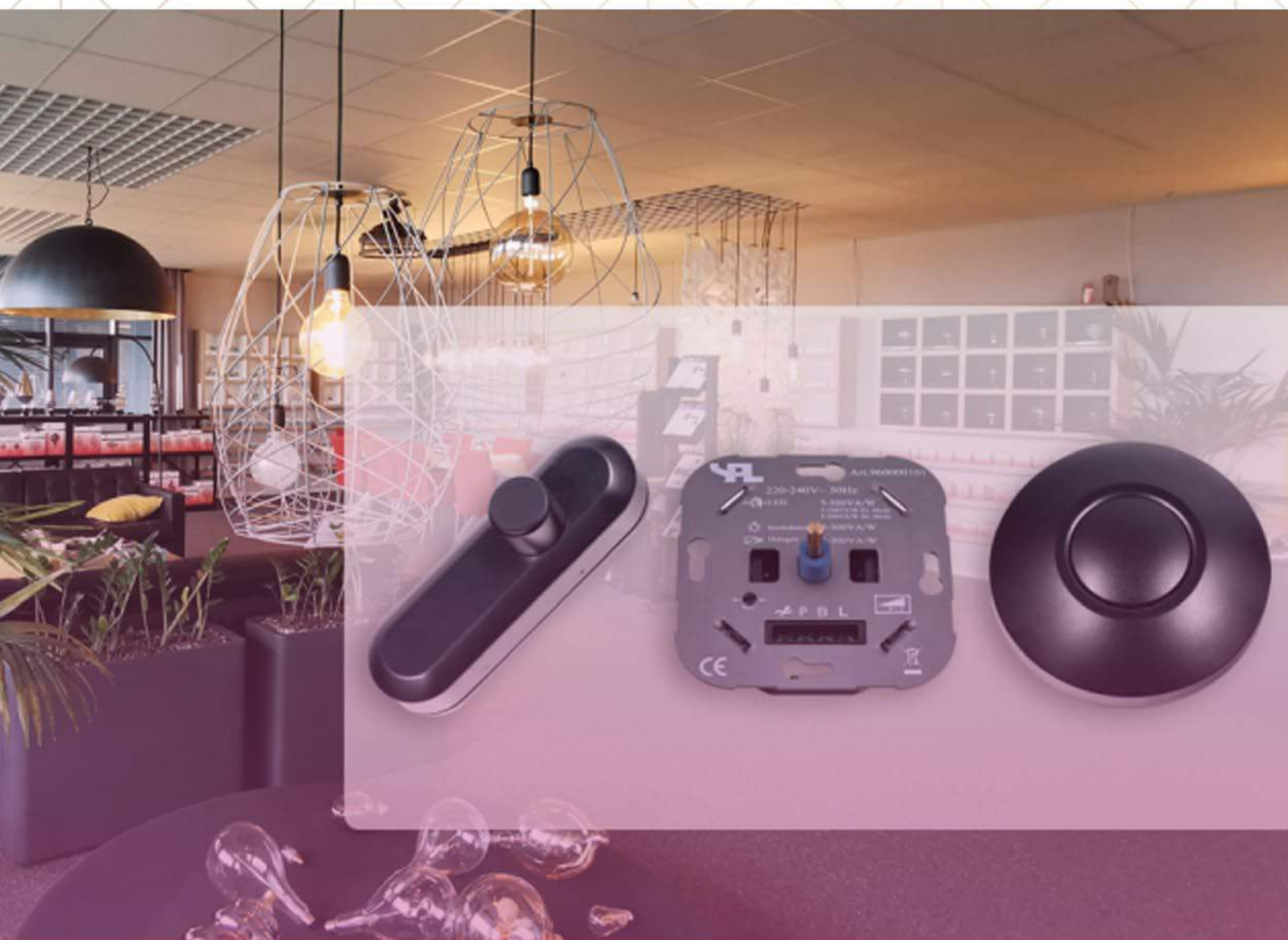


Figure 6

Article No	Description	Figure	Socket	Diameter (mm)	Total length (mm)	Lumen	Candela	Rated Wattage	Colour temp	Beam angle	Current type	Voltage	Power factor	Energy class	Dimmable	Lifespan (hrs)	Repl. wattage	Warranty (years)
L027241521	E27 G45x72 100Lm 2W 830 Opal	1	E27			100		2	830	320	AC	220 - 240	0.3	G	No	20000	11	2
027241222	E27 G45x72 1W Red	2	E27			7		1		320	AC	230	0.2		No	15000	1	2
027241223	E27 G45x72 1W Green	3	E27			21		1		320	AC	230	0.2		No	15000	2	2
027241224	E27 G45x72 1W Yellow	4	E27			50		1		320	AC	230	0.2		No	15000	6	2
027241225	E27 G45x72 1W Orange	5	E27			35		1		320	AC	230	0.2		No	15000	4	2
L027241226	E27 G45x68 1W Blue	6	E27			5		1		320	AC	220 - 240	0.1		No	20000	1	2

Accessories

Accessories surrounding LED lighting to support the products in the LED range of SPL Professional Lighting. Think for example of dimmers, switches, trailing edges and transformers.



PROFESSIONAL
LIGHTING

Party



Figure 1

Article No	Description	Figure	Socket	Diameter (mm)	Total length (mm)	Lumen	Candela	Rated Wattage	Colour temp	Beam angle	Current type	Voltage	Power factor	Energy class	Dimmable	Lifespan (hrs)	Repl. wattage	Warranty (years)
604500004	Rubber Ring E27 IP55 Black Big	1	E27															

Transformer



Figure 1



Figure 2

Article No	Description	Figure	Socket	Diameter (mm)	Total length (mm)	Lumen	Candela	Rated Wattage	Colour temp	Beam angle	Current type	Voltage	Power factor	Energy class	Dimmable	Lifespan (hrs)	Repl. wattage	Warranty (years)
605100500	Govena Transformer 0-50W 12V AC DIM YT50	1										220 - 240						
605101500	Govena Transformer 0-150W 12VAC DIM YT150	2										220 - 240						

Dimmer



Figure 1



Figure 2



Figure 3



Figure 4



Figure 5



Figure 6



Figure 7



Figure 8

Article No	Description	Figure	Socket	Diameter (mm)	Total length (mm)	Lumen	Candela	Rated Wattage	Colour temp	Beam angle	Current type	Voltage	Power factor	Energy class	Dimmable	Lifespan (hrs)	Repl. wattage	Warranty (years)
960000101	Dimmer Switch Auto Detect LED 5-200W	1						200				220 - 240						3
960000201	Rotary Cord Dimmer LED 0-50W Black	2						50				220 - 240						3
960000202	Rotary Cord Dimmer LED 0-50W White	3						50				220 - 240						3
960000203	Push Cord Dimmer LED 0-50W Black	4						50				220 - 240						3
960000204	Push Cord Dimmer LED 0-50W White	5						50				220 - 240						3
960000205	Rotary Foot Dimmer LED 0-50W Black	6						50				220 - 240						3
960000206	Push Foot Dimmer LED 0-50W Black	7						50				220 - 240						3
960000207	Plug In Dimmer LED 3-100W White	8						100				220 - 240						3

Hook



Figure 1



Figure 2

Article No	Description	Figure	Socket	Diameter (mm)	Total length (mm)	Lumen	Candela	Rated Wattage	Colour temp	Beam angle	Current type	Voltage	Power factor	Energy class	Dimmable	Lifespan (hrs)	Repl. wattage	Warranty (years)
EURHKSMALL	Euro Hook Small 27x42	1																
EURHKBIG	Euro Hook Big 35x45	2																

Schiefer Lighting

Since 1995, Schiefer has been importing and exporting over 10,000 different types of lamps and keeps stock of over 3 million lamps. Our customers are traders, wholesalers, OEM customers, customers specializing in project lighting, fixture manufacturers, bigger end users and special customers.

We export to over 25 different countries all over the world and specialize in 9 different product categories:

1. Signal Lamps
2. Special Incandescent Lamps
3. General Lighting Lamps
4. (Eco) Halogen Lamps
5. (Compact) Fluorescent Lamps
6. Signal LED / Special Purpose LED
7. Retrofit LED
8. HID / Metal Halide
9. Holders / Adaptors / Parts & Accessories

Besides own import and our own registered brand SPL, we also supply popular brands like Philips, Osram, Sylvania et cetera. In addition to that, we provide your tailor made, own packaging: we help you with your own design and provide EAN codes. We make sure all packing details are according to the lamp specifications and comply with legislation.

Schiefer has her own in-house testing equipment to ensure 100 percent compliance.



For each LED production batch that arrives at Schiefer warehouses, we test 3 LEDs and archive them together with the test results. This test is complementary to the production tests already done in China prior to shipping to Europe (please also see under Chang Ji Lighting Trading). Each batch can be identified through our CRM system by using batch codes. For our own SPL brand and depending on the quality line chosen, we give a 2 to 5 year guarantee. In the event of a recall, we will support our customers for 100% and Chang Ji will arrange all necessary actions towards the factories.

We provide several standard price lists that cover over 5,000 different items. Any item that is not in our standard price lists can be sourced and added to your personal price list upon request. On our website, you will find more information about our company, team and program.

www.schiefer.nl | www.spl-lighting.com

SCHIEFER LIGHTING

Product range:

- Signal lamps
- Special incandescent lamps
- General lighting lamps
- (Eco) halogen
- (C)FL
- Signal led / Special application led
- Retrofit led
- HID / Metal halide
- Lamp holders / adaptors / parts

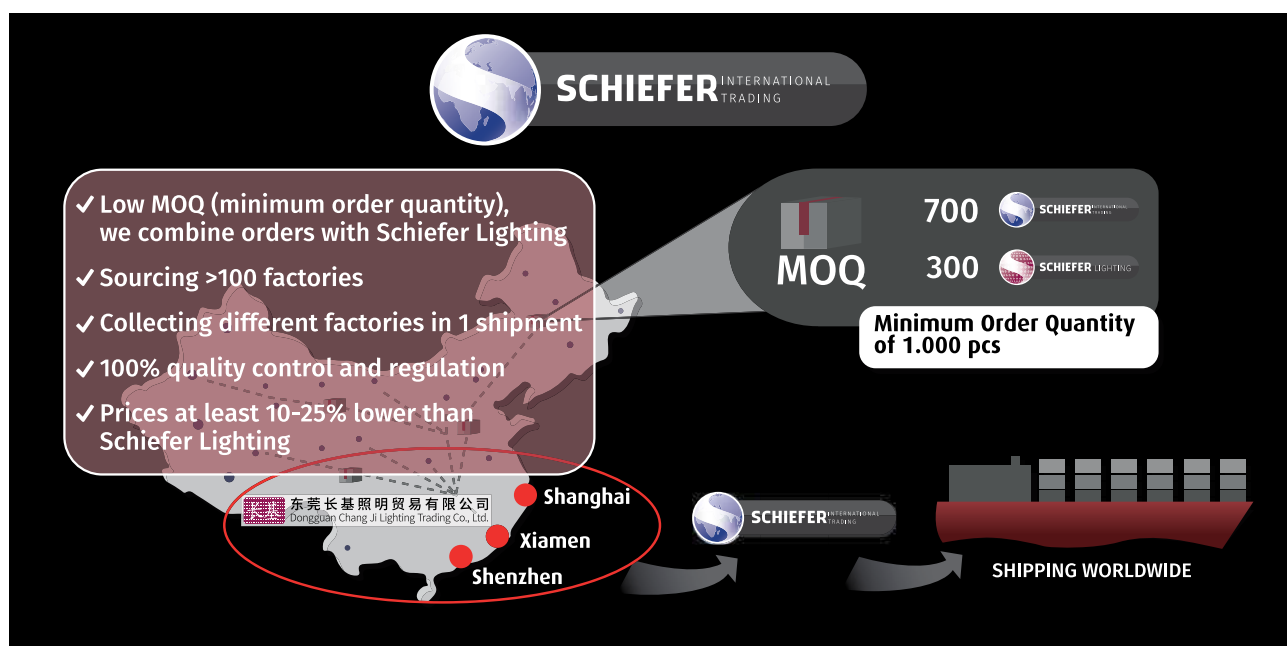
- ✓ 10.000 types of lamps available
- ✓ > 3 million lamps in stock
- ✓ Shipment worldwide
- ✓ SPL brand + OEM
- ✓ Wholesale function for brands
- ✓ Inhouse testing equipment

Schiefer International Trading

Since 2017, we serve customers with direct shipments from China under the name of Schiefer International Trading. We have contact with over 100 factories. We excel in collecting different types of goods for our customers from different factories in 1 single container, arranging 1 single export document. Our local contacts, on-site employees and local logistical knowledge enable us to do so quicker hence cheaper than our customers would do when importing themselves. Shipments can be arranged from 3 areas: Shanghai, Xiamen or Shenzhen.

Shipments from Xiamen and Shanghai are done by DEKRA or KLG, our logistic partner. In Shenzhen, we also check with our own people from Chang Ji. Importing via Schiefer International Trading means importing via a 100% European company whilst still having the same benefit of low pricing as you are used to via traditional Chinese trading companies. Your prices will be at least

10-25% lower than buying via Schiefer Lighting. Schiefer International Trading arranges 100% quality control and certificates according to European legislation and European knowledge. Our USP: we combine the productions of our trading customers together with our own productions for Schiefer Lighting stock. This means that you are no longer facing nor dealing with high China MOQ's! Any item new to the Schiefer Lighting portfolio will be subject to presale to some of our bigger customers and/or we take the rest in stock so we will reach the MOQ together with the customer. We offer our lamps based on FOB with minimum shipment amount of USD 10,000 for ocean shipments, either full container or LCL. We are willing to do lower amounts against additional charges to be confirmed to cover local costs. In addition, we can arrange shipments by air or train. Just like any Chinese trader, we will ask for 30% down payment and the remaining 70% before shipment.



Chang Ji Lighting Trading

Schiefer Lighting and Schiefer International Trading are supported by our third company Chang Ji Lighting Trading, being 100% owned by the CEO of Schiefer Lighting and Schiefer International Trading. All orders from Schiefer Lighting and Trading go through Chang Ji. By doing so, we buy from local suppliers that do not have any export license and only supply to Chinese traders. This guarantees you the lowest price possible, because local Chinese companies always get lower prices than export customers do.

At the very same time we have a 100% quality and logistics control. Our suppliers have to sign our purchasing conditions, which cover 24 pages in Chinese and English, all according to Chinese legislation. Because our own, local employees do all work, we are able to arrange the lowest transportation costs.



东莞长基照明贸易有限公司
Dongguan Chang Ji Lighting Trading Co., Ltd.

MOQ

700  SCHIEFER
300  SCHIEFER

Minimum Order Quantity of 1.000 pcs



东莞长基照明贸易有限公司
Dongguan Chang Ji Lighting Trading Co., Ltd.

Shanghai
Xiamen
Shenzhen

- ✓ Purchasing according Chinese legislation
- ✓ Lower prices by local purchasing and tax back
- ✓ Lower transportation costs
- ✓ 100% logistic control
- ✓ Local employees
- ✓ Own export licence



 东莞长基照明贸易有限公司
Dongguan Chang Ji Lighting Trading Co., Ltd.

WWW.SPL-LIGHTING.COM