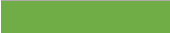

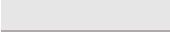

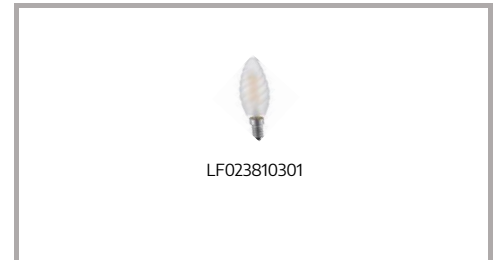




Dimmer compatibility LED

	Good dimming
	Good dimming. Some slight flickering in lower or higher levels may occur
	Dimming is not very smooth and/or flickering during a non definite part of the dimming range may occur
	Dimming not possible



Brand	Model	Type	load	load type	min	max	low
BERKER	2873		20-500	RL	2	10	100
BUSCH-JAEGER	6523U		2-100	RLC	3	10	100
BUSCH-JAEGER	6513U	Tronic	40-420	RC	2	10	100
Calex	2483HC	LED	3-70W	RC	1	10	100
GIRA	226200		20-500	RL	2	10	100
INTERTEK	68.40.99.07.99	LED	5-150	RC	1	10	100
JUNG	1730DD	LED	3-60W	RLC	1	10	100
JUNG	1731DD	LED	3-100	RLC	1	10	100
KLEMKO	D-PAF-200	LED	1-200	RC	2	10	100
LEGRAND	7 525 60	LED	5-75	RLC	1	10	100
LEGRAND	48871	LED	1-150		1	10	100
LUMEO	T39.07	Triac	3-100	RL	1	10	100
PEHA	431 HAN LED	LED	06-60	RL	2	10	100
Schneider	SBD315RC	Tronic	20-315	RC	3	10	100
SPL	960000101	LED	5-200/300	RL/RC	1	10	100
TRADIM	2485H	LED	0-70	RC	1	10	100
TRADIM	2490HP-exop	Tronic	5-150	RC	2	10	100
TRADIM	2494-K-exop	Tronic	2x3-100	RC	2	10	100
TRONIX	215-131	LED	10-350	LED	2	10	100
YPHIX	D350EX	LED	5-350	RC	2	10	100
NIKO	310-0190X	LED	5-325	RLC	1		100%

Information presented is meant to serve as a general guideline only. Tests were conducted on 1 single dimmer in our Laboratories. True 1:1 dimmer compatibility can only be determined on-site under actual conditions and within the final application. Results can differ from dimmer to dimmer of even the same type number and brand. Please contact your local representative or a recognized electrical installer if any additional information is required.