



Dimmer compatibility LED

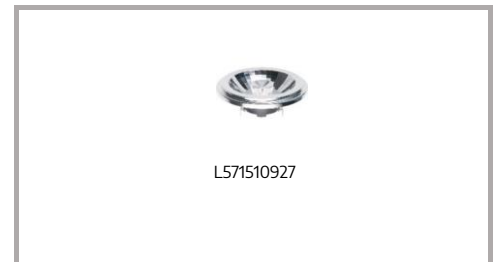


Good dimming

Good dimming. Some slight flickering in lower or higher levels may occur

Dimming is not very smooth and/or flickering during a non definite part of the dimming range may occur

Dimming not possible



L571510927

Recommended driver SC Power serie KVP

For other drivers please contact our sales department

Brand	Model	Type	load	load type	min	max	low
BERKER	2873		20-500	RL	1	5	90%
BUSCH-JAEGER	6523U		2-100	RLC	1	5	90%
BUSCH-JAEGER	6513U	Tronic	40-420	RC		Unsuitable	
Calex	2483HC	LED	3-70W	RC		Unsuitable	
GIRA	226200		20-500	RL	1	5	100%
INTERTEK	68.40.99.07.99	LED	5-150	RC	1	5	90%
JUNG	1730DD	LED	3-60W	RLC	1	5	90%
JUNG	1731DD	LED	3-100	RLC	1	5	90%
KLEMKO	D-PAF-200	LED	1-200	RC	1	5	90%
LEGRAND	7 525 60	LED	5-75	RLC	1	5	80%
LEGRAND	48871	LED	1-150		1	5	90%
LUMEO	T39.07	Triac	3-100	RL	1	5	100%
PEHA	431 HAN LED	LED	06-60	RL	1	5	90%
Schneider	SBD315RC	Tronic	20-315	RC	1	5	90%
SPL	960000101	LED	5-200/300	RL/RC	1	5	100%
TRADIM	2485H	LED	0-70	RC		Unsuitable	
TRADIM	2490HP-exop	Tronic	5-150	RC		Unsuitable	
TRADIM	2494-K-exop	Tronic	2x3-100	RC	1	5	90%
TRONIX	215-131	LED	10-350	LED	1	5	90%
YPHIX	D350EX	LED	5-350	RC		Unsuitable	
HZC	EU-UP4	LED	5-300		1	3	90%

Information presented is meant to serve as a general guideline only. Tests were conducted on 1 single dimmer in our Laboratories. True 1:1 dimmer compatibility can only be determined on-site under actual conditions and within the final application. Results can differ from dimmer to dimmer of even the same type number and brand. Please contact your local representative or a recognized electrical installer if any additional information is required.