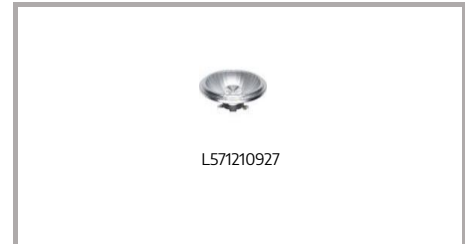


Dimmer compatibility LED

| | |
|--|--|
| | Good dimming |
| | Good dimming. Some slight flickering in lower or higher levels may occur |
| | Dimming is not very smooth and/or flickering during a non definite part of the dimming range may occur |
| | Dimming not possible |



Recommended driver Govena serie YT

For other drivers please contact our sales department

| Brand | Model | Type | load | load type | min | max | low |
|--------------|----------------|--------|-----------|-----------|-----|-----|------|
| BERKER | 2873 | | 20-500 | RL | 1 | 3 | 100% |
| BUSCH-JAEGER | 6523U | | 2-100 | RLC | 1 | 3 | 100% |
| BUSCH-JAEGER | 6513U | Tronic | 40-420 | RC | 1 | 3 | 90% |
| Calex | 2483HC | LED | 3-70W | RC | 1 | 3 | 90% |
| GIRA | 226200 | | 20-500 | RL | 1 | 3 | 100% |
| INTERTEK | 68.40.99.07.99 | LED | 5-150 | RC | 1 | 3 | 100% |
| JUNG | 1730DD | LED | 3-60W | RLC | 1 | 3 | 100% |
| JUNG | 1731DD | LED | 3-100 | RLC | 1 | 3 | 100% |
| KLEMKO | D-PAF-200 | LED | 1-200 | RC | 1 | 3 | 100% |
| LEGRAND | 7 525 60 | LED | 5-75 | RLC | 1 | 3 | 80% |
| LEGRAND | 48871 | LED | 1-150 | | 1 | 3 | 100% |
| LUMEO | T39.07 | Triac | 3-100 | RL | 1 | 3 | 100% |
| PEHA | 431 HAN LED | LED | 06-60 | RL | 1 | 3 | 100% |
| Schneider | SBD315RC | Tronic | 20-315 | RC | 1 | 3 | 100% |
| SPL | 960000101 | LED | 5-200/300 | RL/RC | 1 | 3 | 100% |
| TRADIM | 2485H | LED | 0-70 | RC | 1 | 3 | 100% |
| TRADIM | 2490HP-exop | Tronic | 5-150 | RC | 1 | 3 | 100% |
| TRADIM | 2494-K-exop | Tronic | 2x3-100 | RC | 1 | 3 | 100% |
| TRONIX | 215-131 | LED | 10-350 | LED | 1 | 3 | 100% |
| YPHIX | D350EX | LED | 5-350 | RC | 1 | 3 | 90% |

Information presented is meant to serve as a general guideline only. Tests were conducted on 1 single dimmer in our Laboratories. True 1:1 dimmer compatibility can only be determined on-site under actual conditions and within the final application. Results can differ from dimmer to dimmer of even the same type number and brand. Please contact your local representative or a recognized electrical installer if any additional information is required.